

# AQI TV App **INSTRUCTION MANUAL**

---



*know what you breathe*

---

## **CONTACT**

### **Address**

706, 7th floor, Crown  
heights, Rohini Sec-10,  
New delhi-110085, India

### **Phone**

(+91) 73918-73918

### **Online**

Email : [info@purelogic.in](mailto:info@purelogic.in)  
Website : [www.pranair.com](http://www.pranair.com)

---

---

# TABLE OF **CONTENTS**

SECTION 01 | HOW TO INSTALL THE AQI APP ON ANDROID TV

**PAGE 5**

SECTION 02 | CONFIGURE ANDROID TV ON APP

**PAGE 7**

SECTION 03 | FOR SINGLE DEVICE DATA

**PAGE 11**

SECTION 04 | COMPARISON THEME

**PAGE 15**

SECTION 05 | HOW TO EDIT THEME

**PAGE 20**

SECTION 06 | HOW TO LINK DEVICE TO ANOTHER TV

**PAGE 22**

---

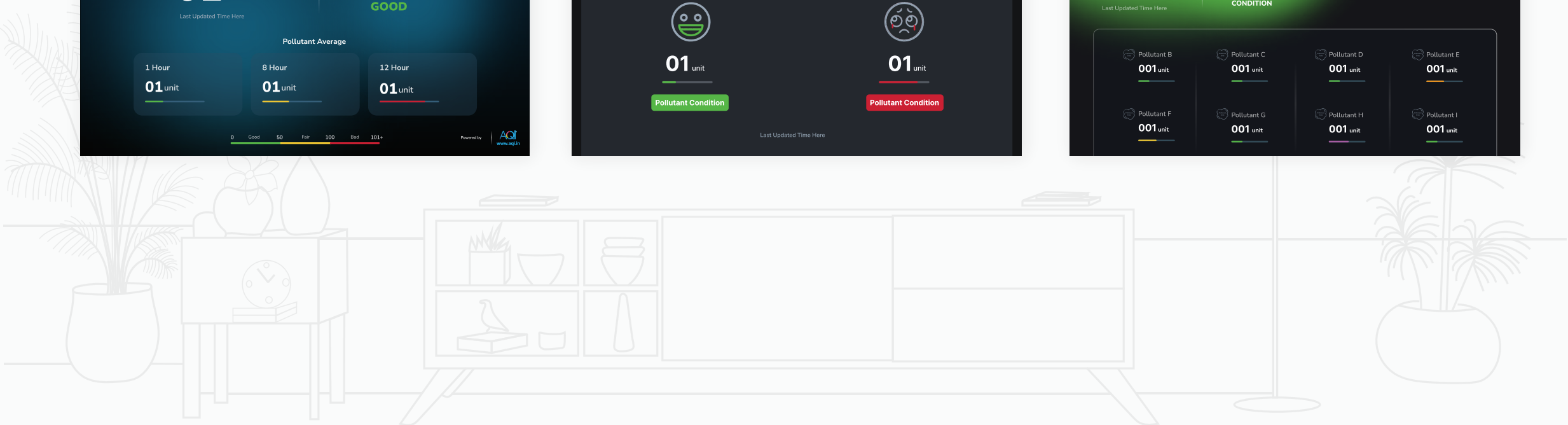
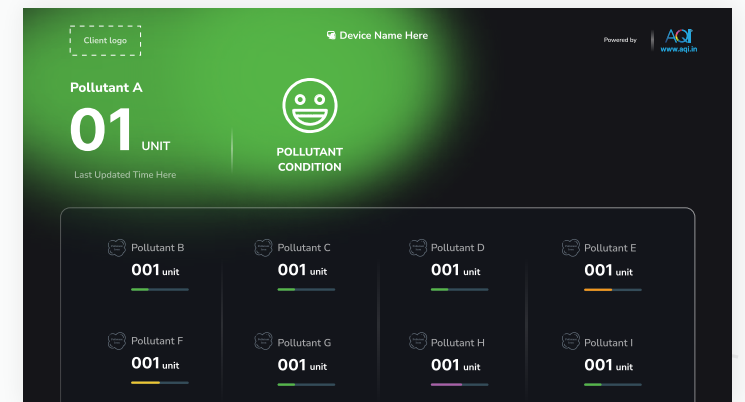
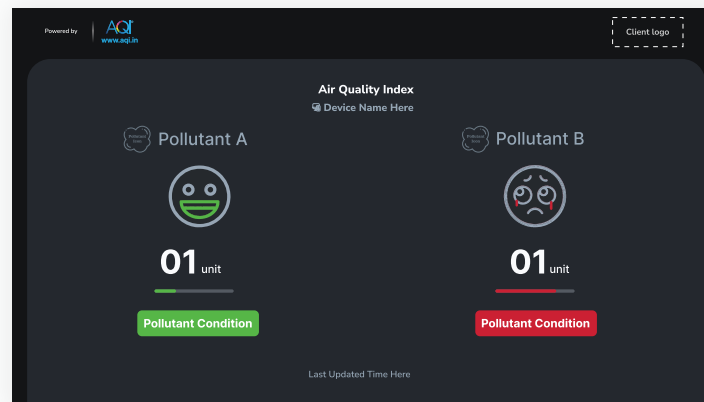
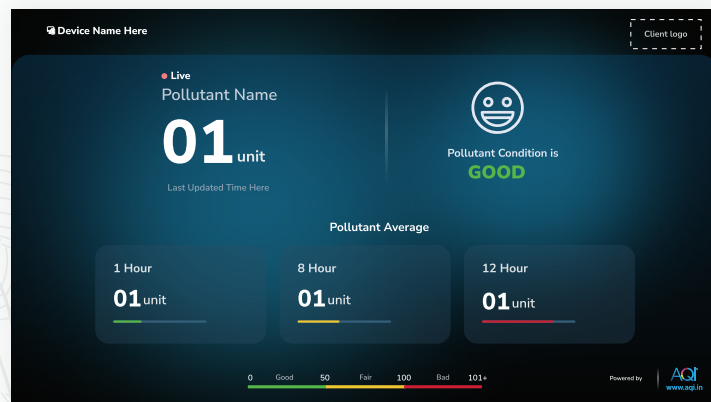
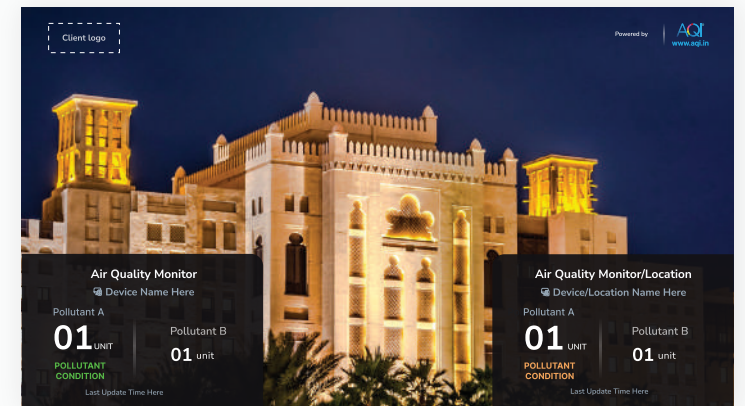
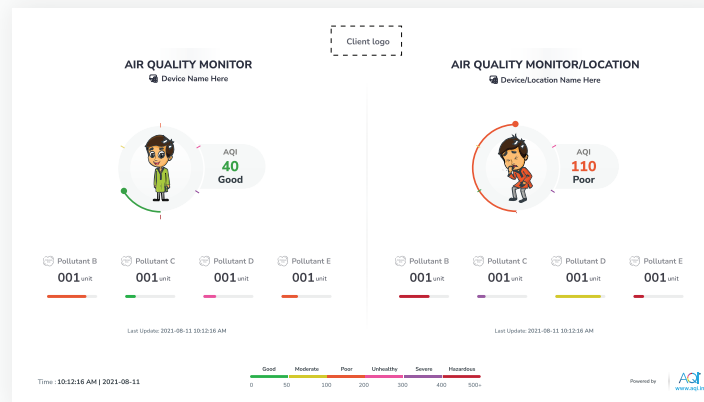
Android TV

# IMPORTANT NOTE

The AQI TV app is exclusively compatible with Android TVs. It can be used on any smart TV running Android TV software. In other situations, Android sticks or devices can be utilized to run the AQI TV app on TVs with an HDMI input.



# Types of THEME



# How to Install the AQI App on Android TV

---

Here are the steps to download and launch the AQI TV app on your Android TV to display the air quality data on the big screen for real-time air quality data accessibility.

1 Open the **Google Play Store** on your Android TV.



2 Search for **"AQI TV"** in the store and start the installation using your internet connection.



3 Once **installed**, open the AQI TV app on your TV.



4 When the app opens, a **QR code** will appear on the screen.

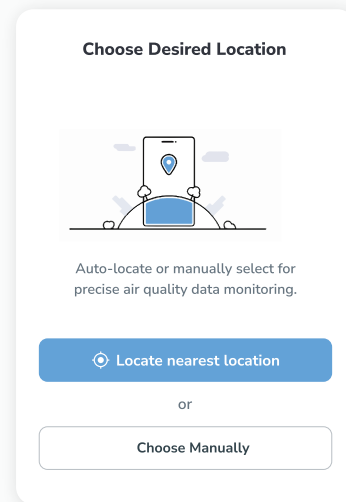
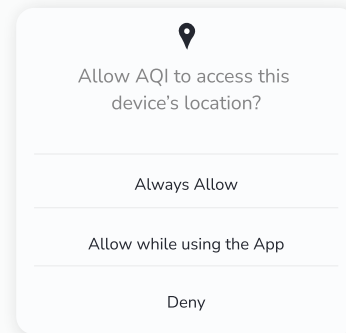
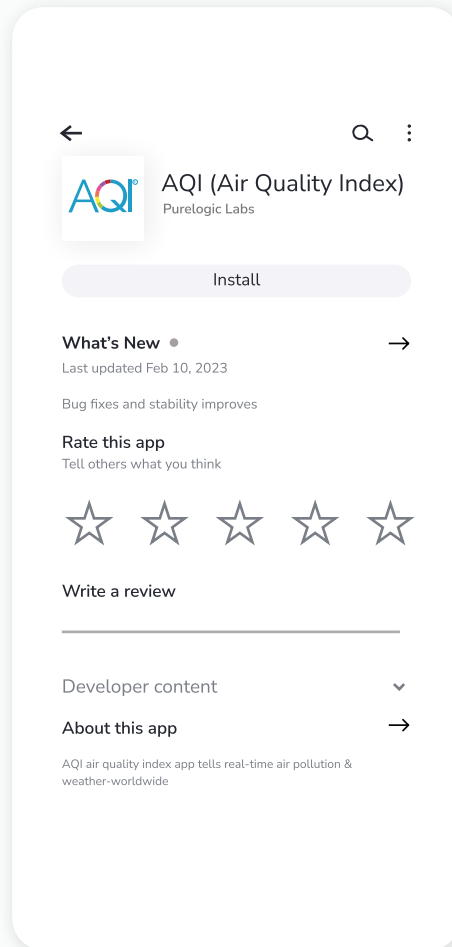


# Configure Android TV on APP

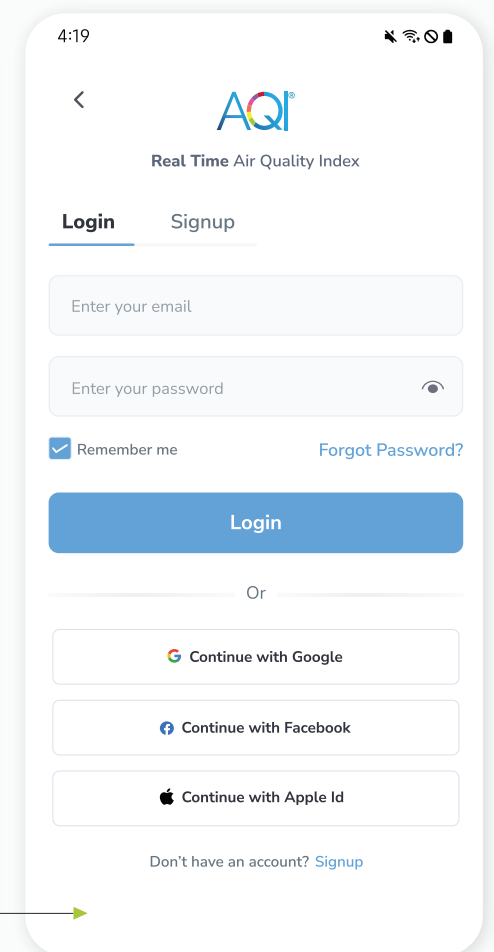
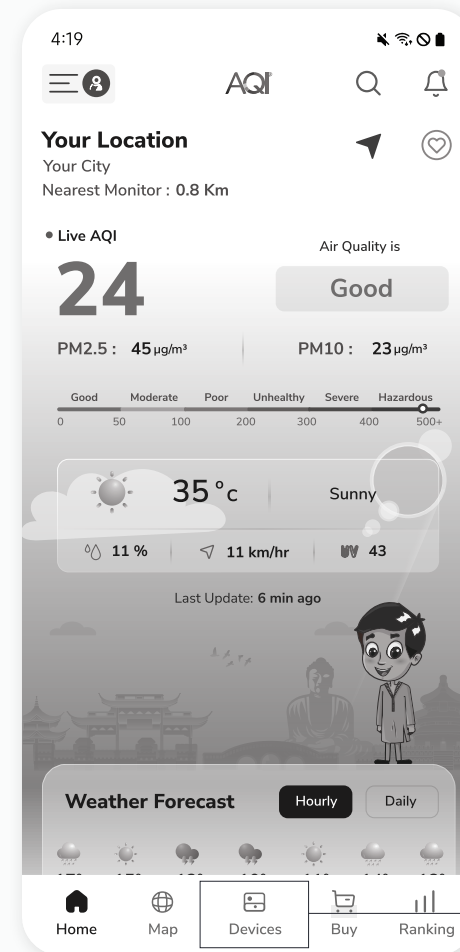
---

Know how to link your Android TV with the mobile AQI app to control the display setting and visibility of the data. Follow these simple steps to connect your TV app and Mobile App for a smooth and integrated experience.

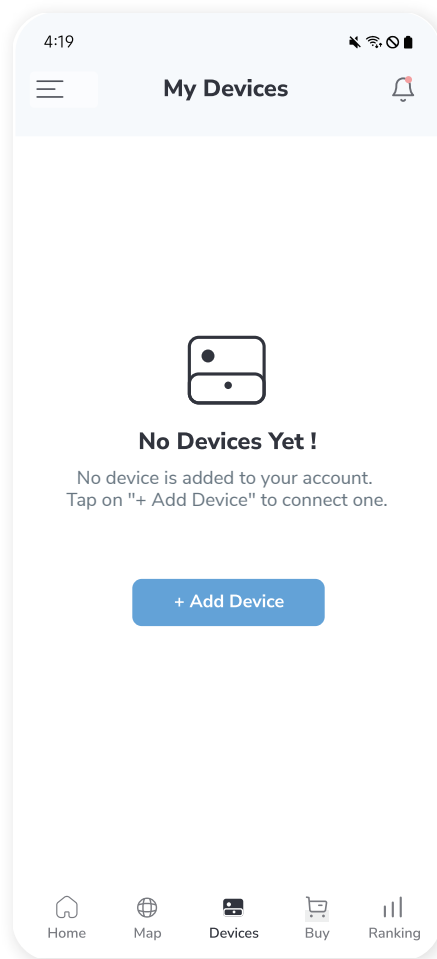
1 Download and install the **AQI App** on your phone (available on Google Play Store for Android and the App Store for iOS). After installing, open the app and allow all the necessary permissions.



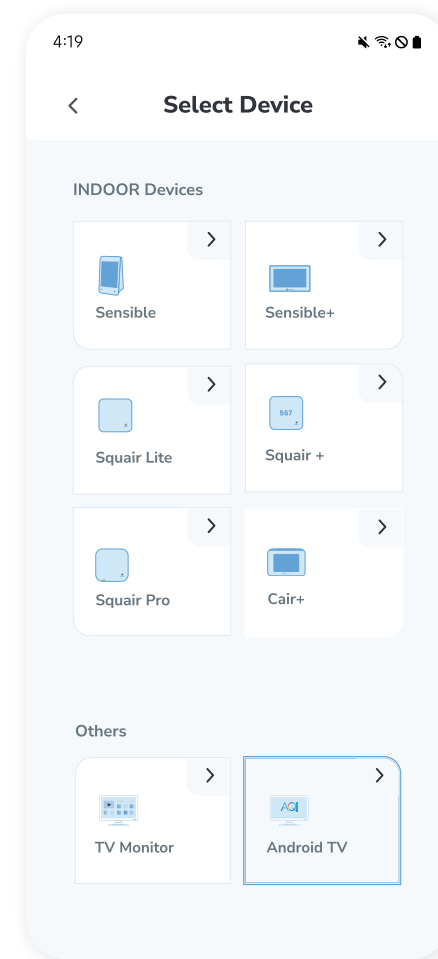
2 Then, Click on "Devices" icon showing in the bottom of home screen. Then **Sign up** to create your account or **Log in** if you already have an account.



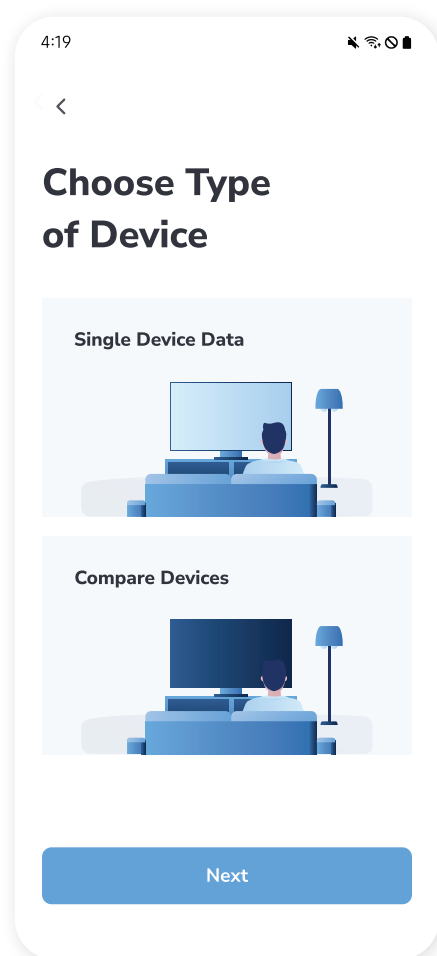
3 After successful login, Tap on **"Devices"** and then click on the **"Add Device"** button.



4 Scroll down and select **"Android TV"** under the Others column.



- 5 After selecting Android TV, a screen to choose the device type will appear.



### Single Device Data

View real-time data from a single device directly on your TV. Easily monitor pollutant levels and track changes in air quality to take timely action.

To know Steps,  
[Refer to page no .11](#)



### Compare Devices

Compare the data of two air quality monitoring devices or one location. Identify pollution trends, and detect variations in AQI across different areas to improve indoor and outdoor air conditions.

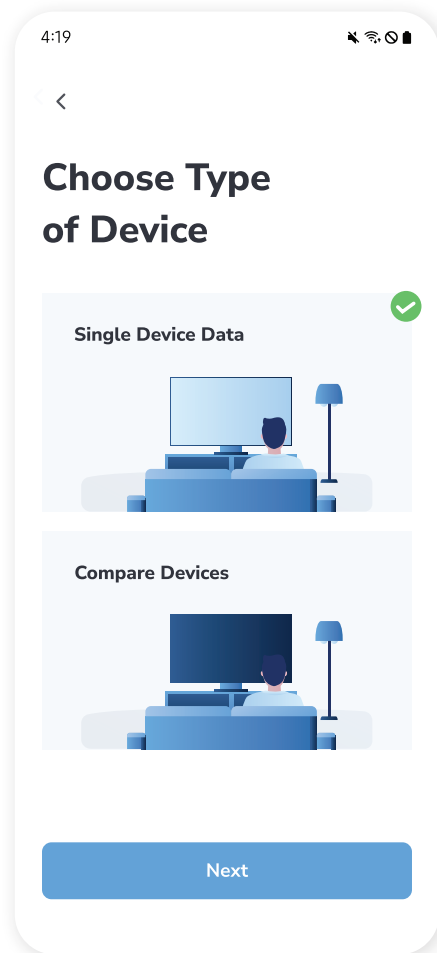
To know Steps,  
[Refer to page no .15](#)

# For Single Device Data

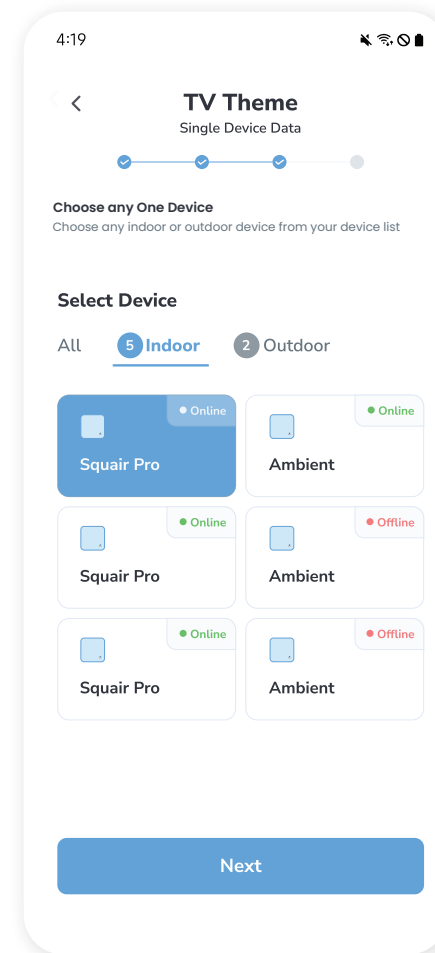
---

Display the data from a single device by choosing the data and design of your choice. Customize the data screen as per your needs and get a personalized display.

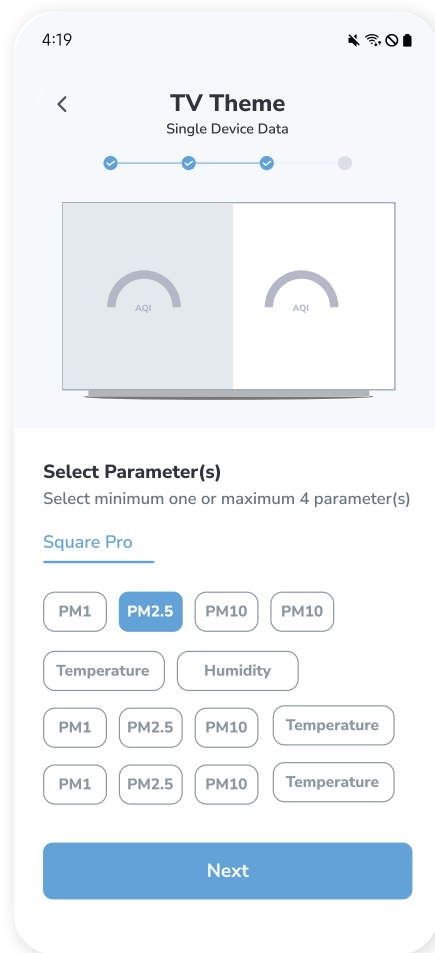
- 1 Choose the first option for single device data and press Next.



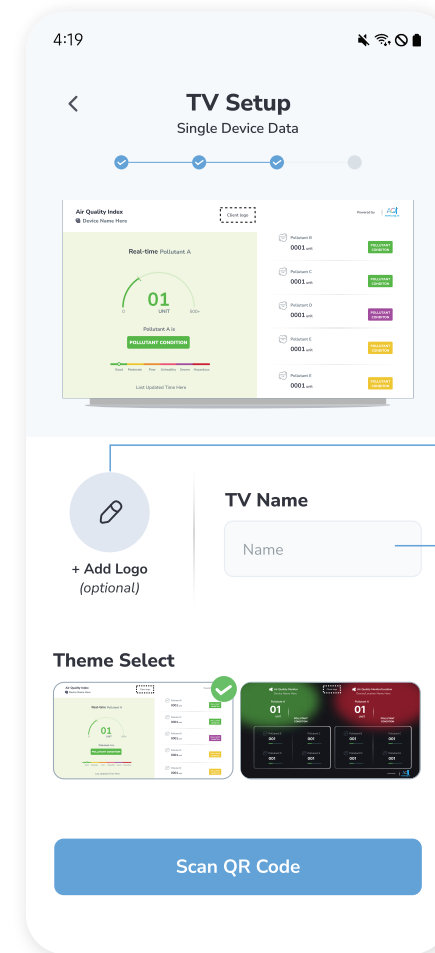
- 2 You will be directed to a list of devices; select the device you want to display on the screen.



- 3 Select one or more **parameters** as per your requirement.

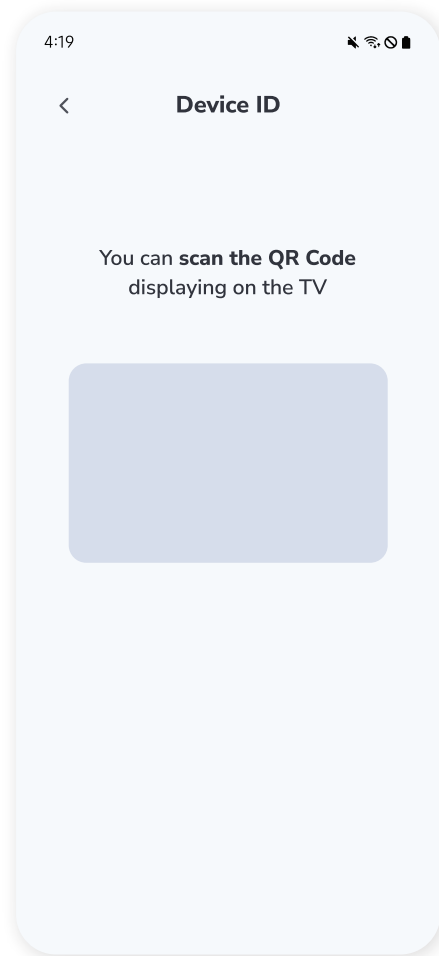


- 4 Pick a **Theme**, enter a **TV name**, and add an optional **logo** if desired.

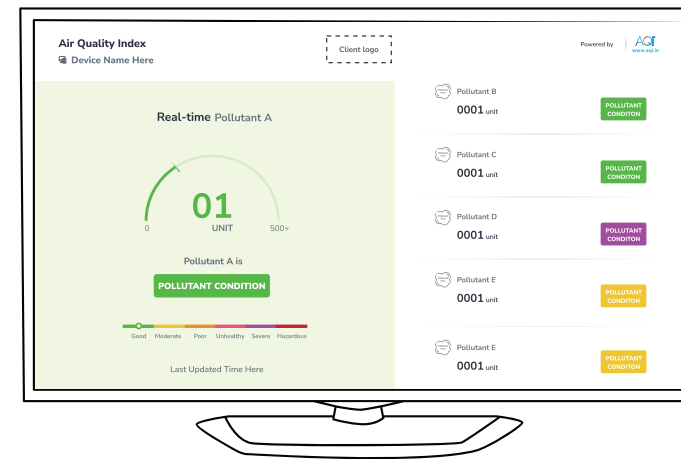


**NOTE: Themes will vary based on the number of selected parameters.**

5 Tap **“Scan QR Code”** and scan the code displayed on your Android TV.



6 Your selected theme will be displayed on your TV in approximately **10-15 seconds**.

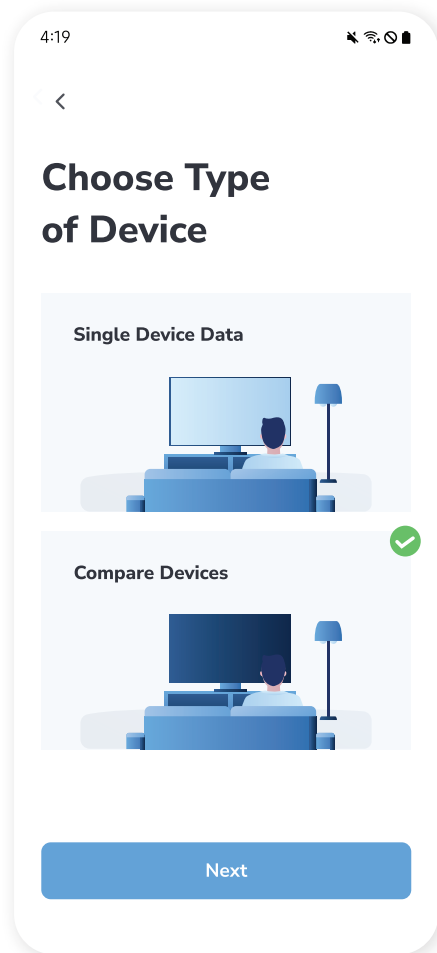


# Comparison Theme

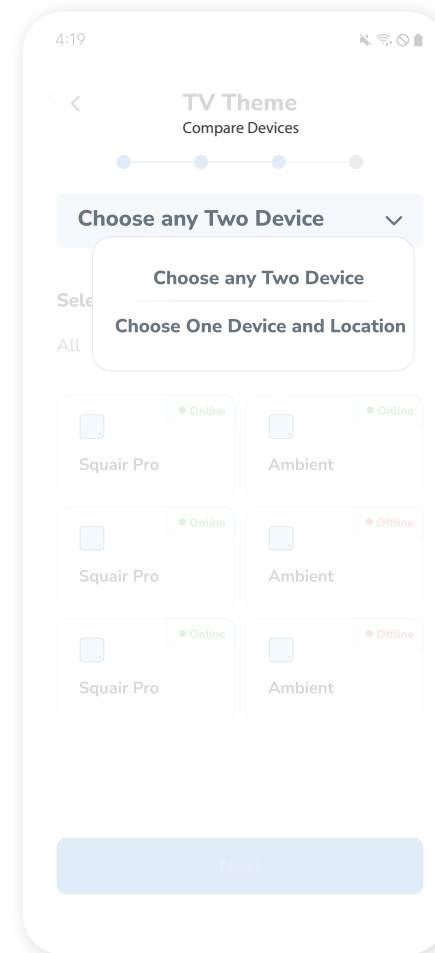
---

Analyze the data side by side to compare the devices or compare a device against a location. Easily know the data trends and differences with comparison and for better decision-making.

1 Select "Compare Devices" and press Next.

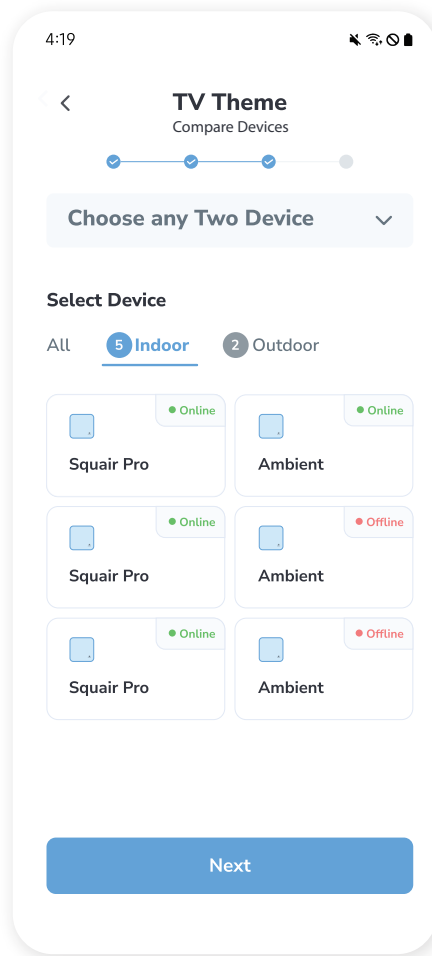


2 Choose whether to compare two devices or one device with one location.



## Choose any Two Device

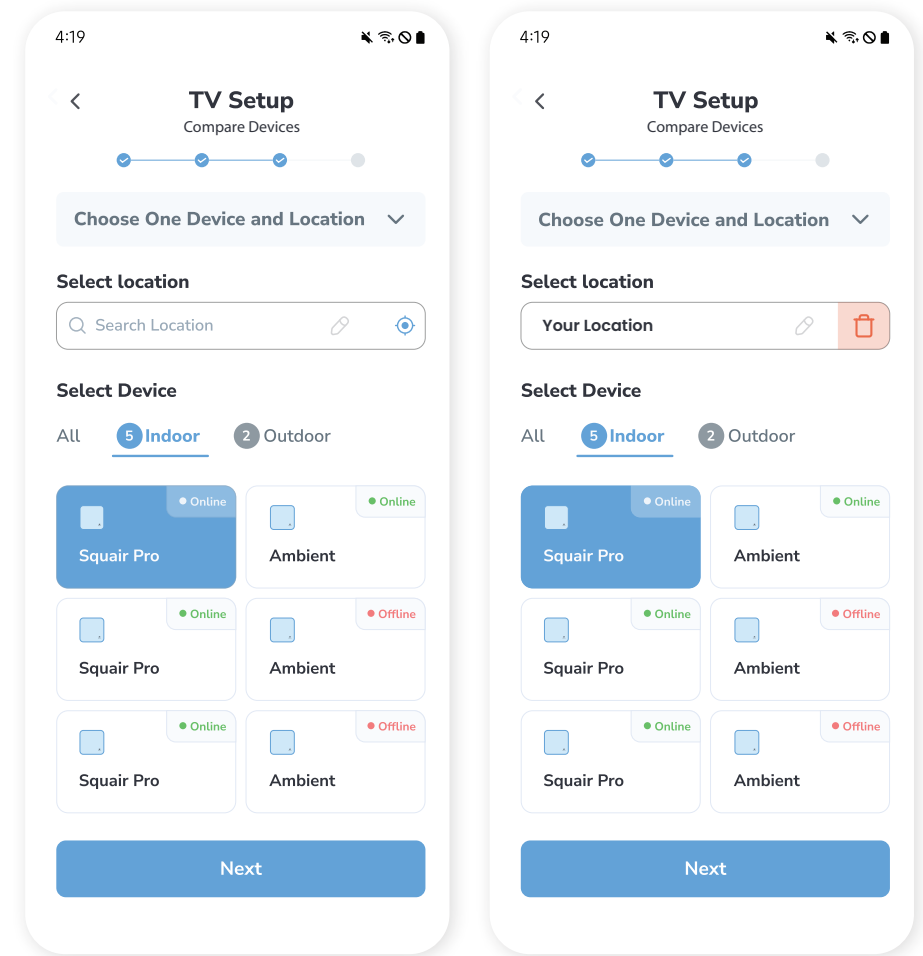
- 3 Select any **two devices** for a side-by-side comparison.



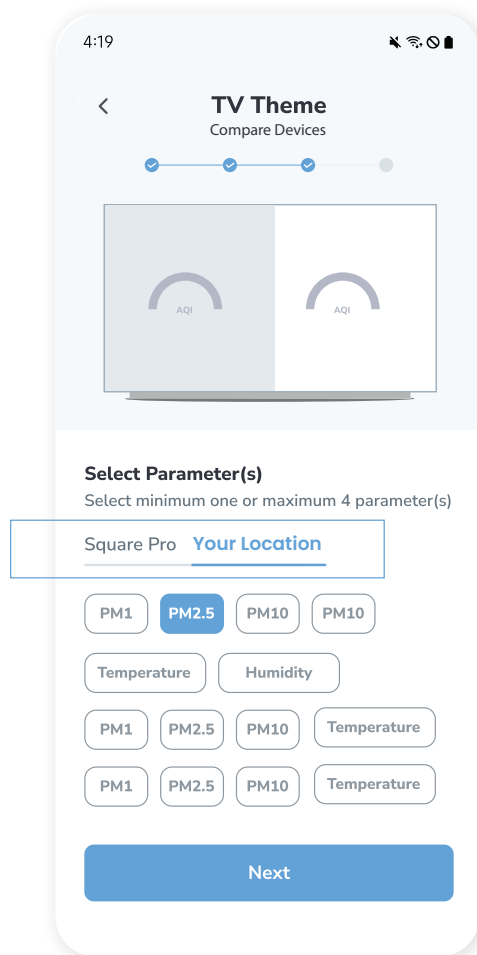
OR

## Choose One Device and Location

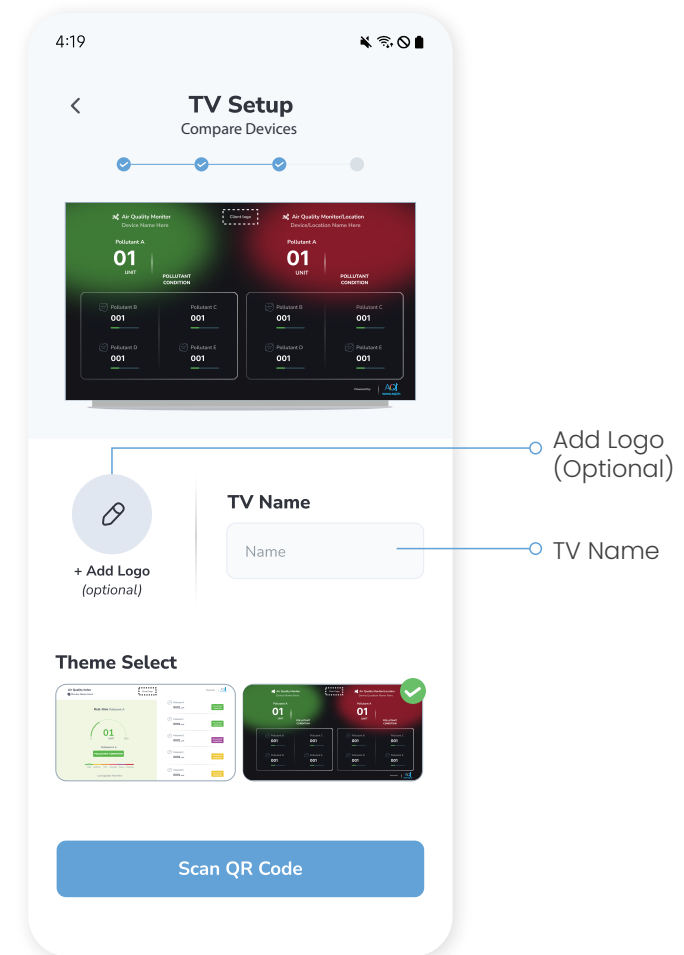
- 4 Select a **Device** and a **Location/city** for comparison.



5 Next, select the parameters you want to display, adding them separately for devices and locations.

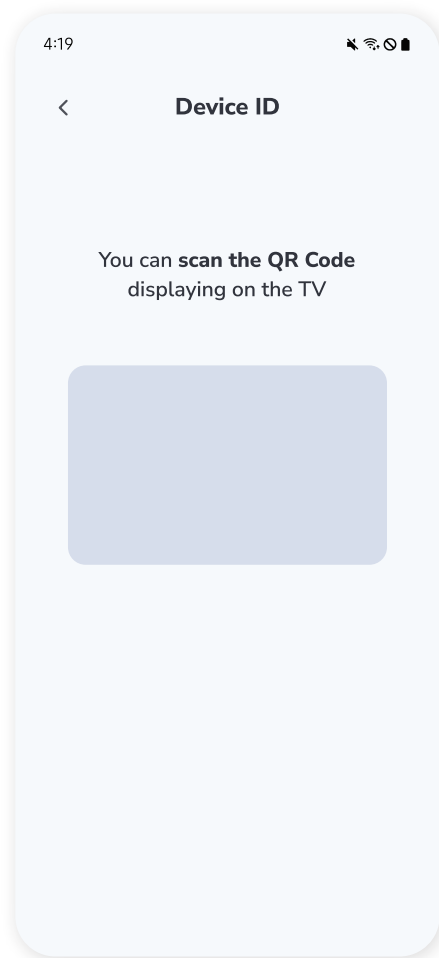


6 Set up the TV by entering a name, selecting a theme, and adding an optional logo.

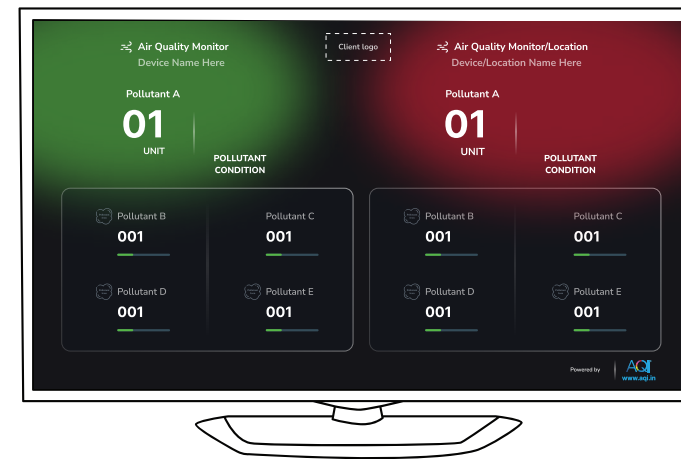


**NOTE: Themes will vary based on the number of selected parameters.**

- 7 Tap “Scan QR” and use your phone to scan the QR code on your TV.



- 8 Your selected theme will be displayed on your TV in approximately 10-15 seconds.



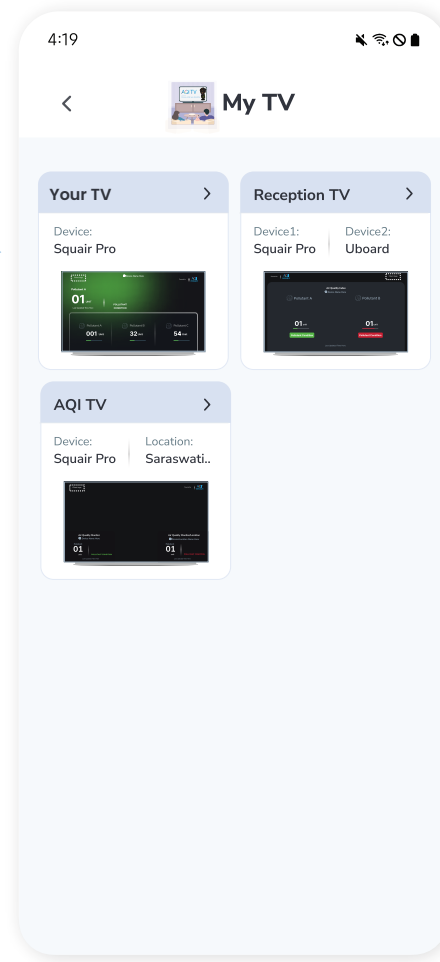
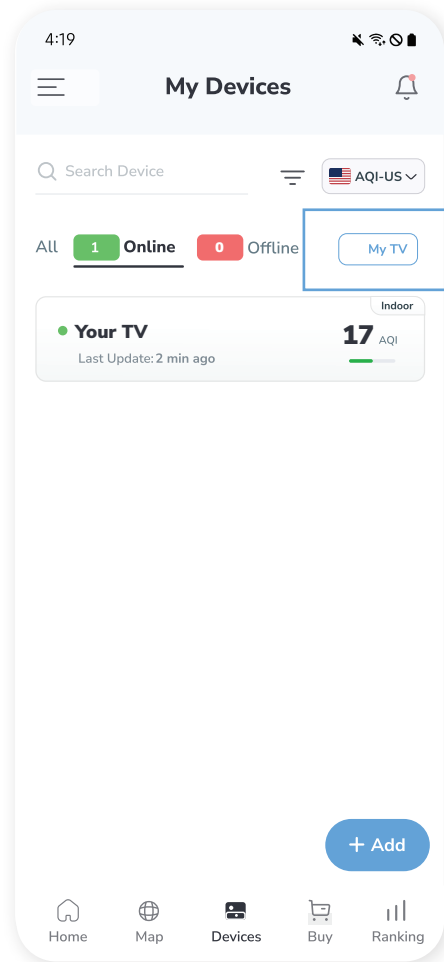
# How to Edit Theme

---

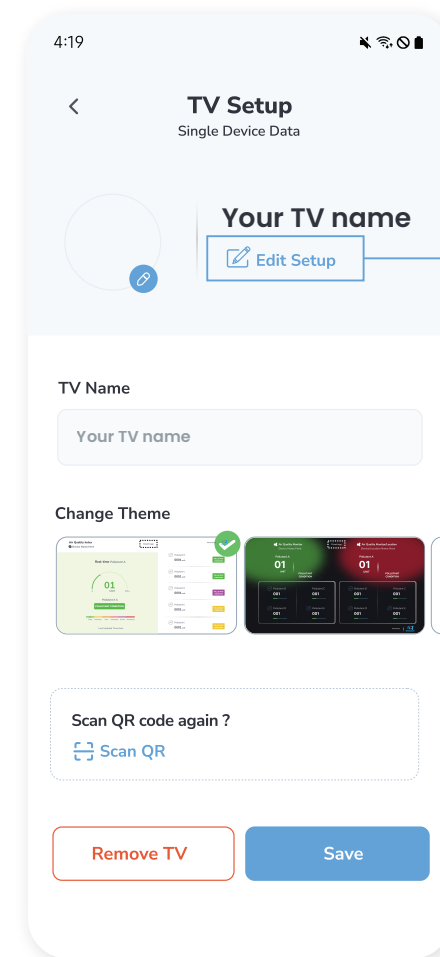
Change the previously selected theme anytime with the theme editing feature and select the best style for your preference to show the air quality monitor's data on your android TV screen.

- 1 Select the **My TV** option in the top-right corner on the My Devices screen, as shown below.

Choose your **TV device** from the list.



- 2 Change the theme by selecting a new one, then scan the QR code again.



To add more parameters to the theme, you must repeat all the steps from the beginning.

**NOTE: If you modify the theme, you will need to repeat all the steps from the beginning.**

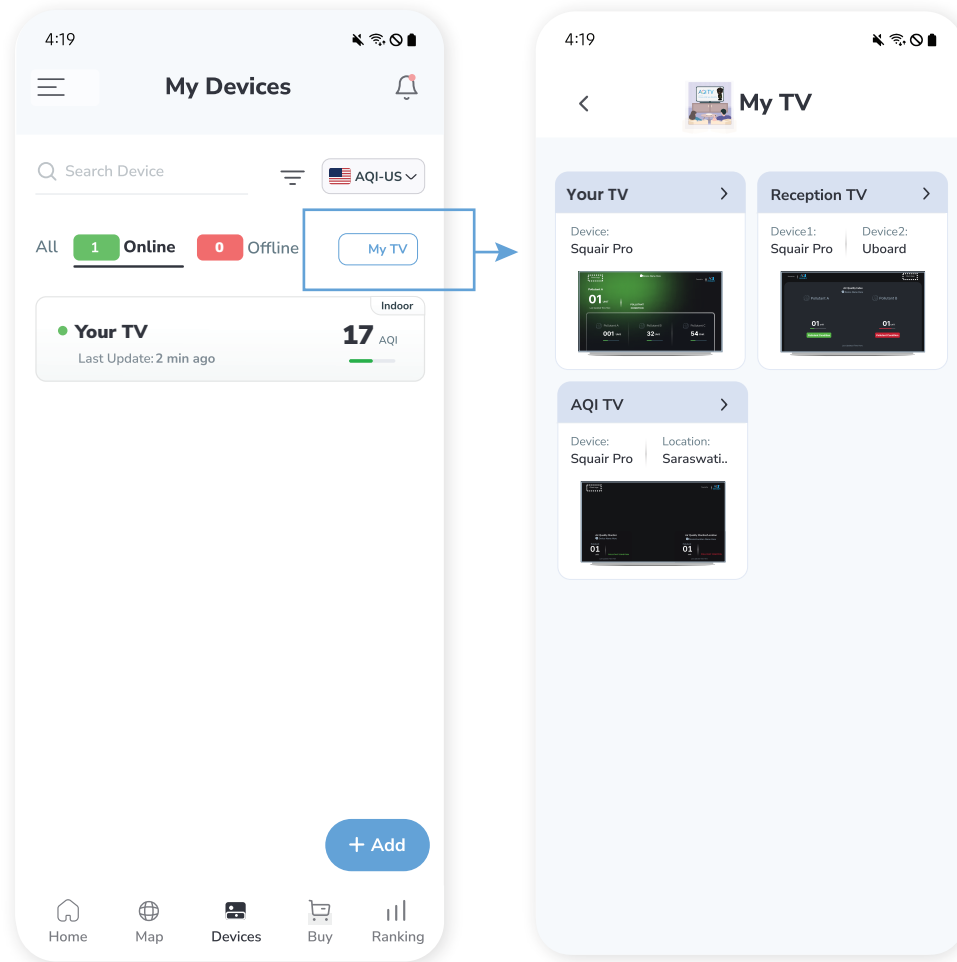
# How to Link Device to another TV

---

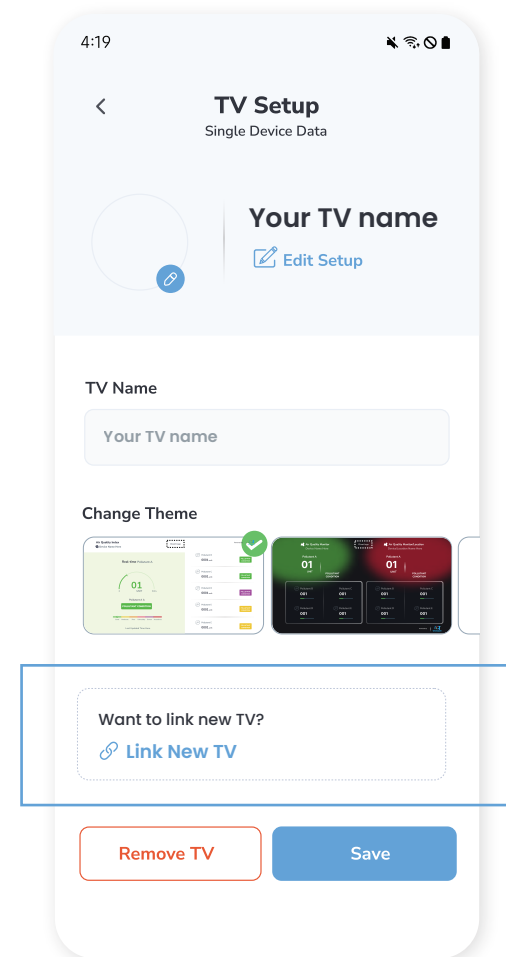
Link your air quality monitor to any other TV anytime or anywhere. Here are easy steps to follow to link the air quality monitor to another TV.

- 1 Select the **My TV** option in the top-right corner on the My Devices screen, as shown below.

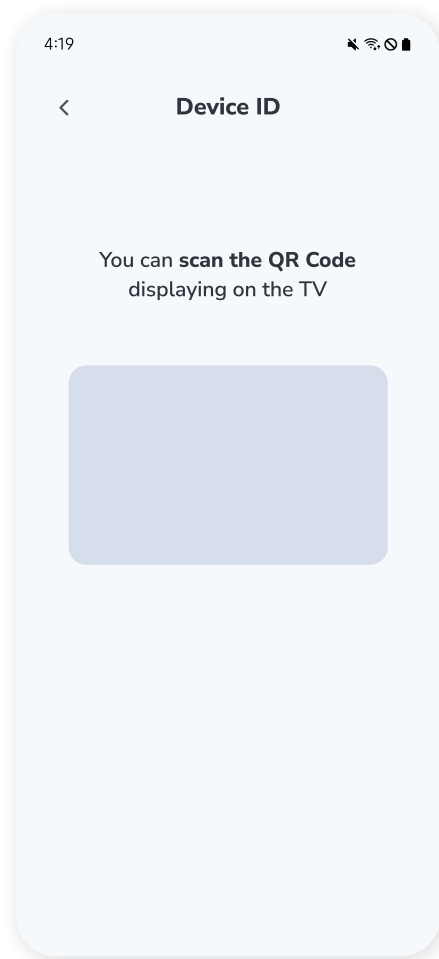
Choose your **TV device** from the list.



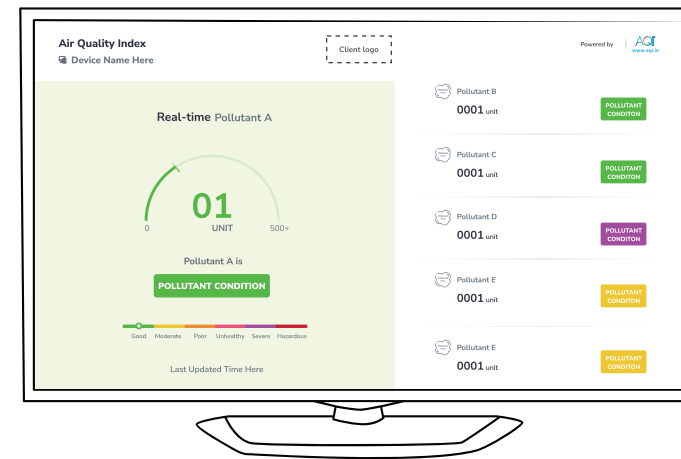
- 2 On the **TV Setup** page, click "**Link New TV**" to link a new TV device. Afterwards, a scan QR Code Page will appear.



- 3 Scan the **QR Code** displayed on your Android TV.



- 4 Your selected theme will be displayed on your TV in approximately **10-15 seconds**.



**NOTE: If you do not want to link to another TV, do not scan the QR code or simply tap the < Back button.**



Prana Air

**Visit us :**

[www.pranaair.com](http://www.pranaair.com)