

About the Device

CAIR+ keeps a track of the indoor air quality for your safety. Place this monitor in an indoor environment such as your room, office, or car to continuously monitor the quality of the air you breathe. It comes with Wi-Fi connectivity and external SD card storage.

Connect your device to the Wi-Fi to explore more features. Keep a tab over the changes in your surroundings through graphical representations wherever you want.



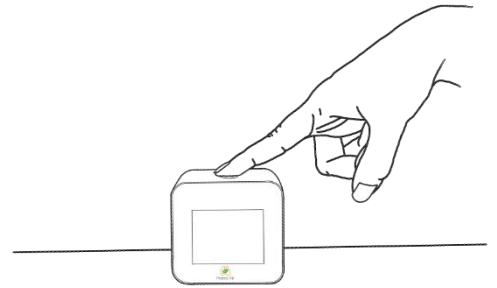
Setting up the Monitor

STEP 1- Connect the monitor to a power source with the cable and adapter.

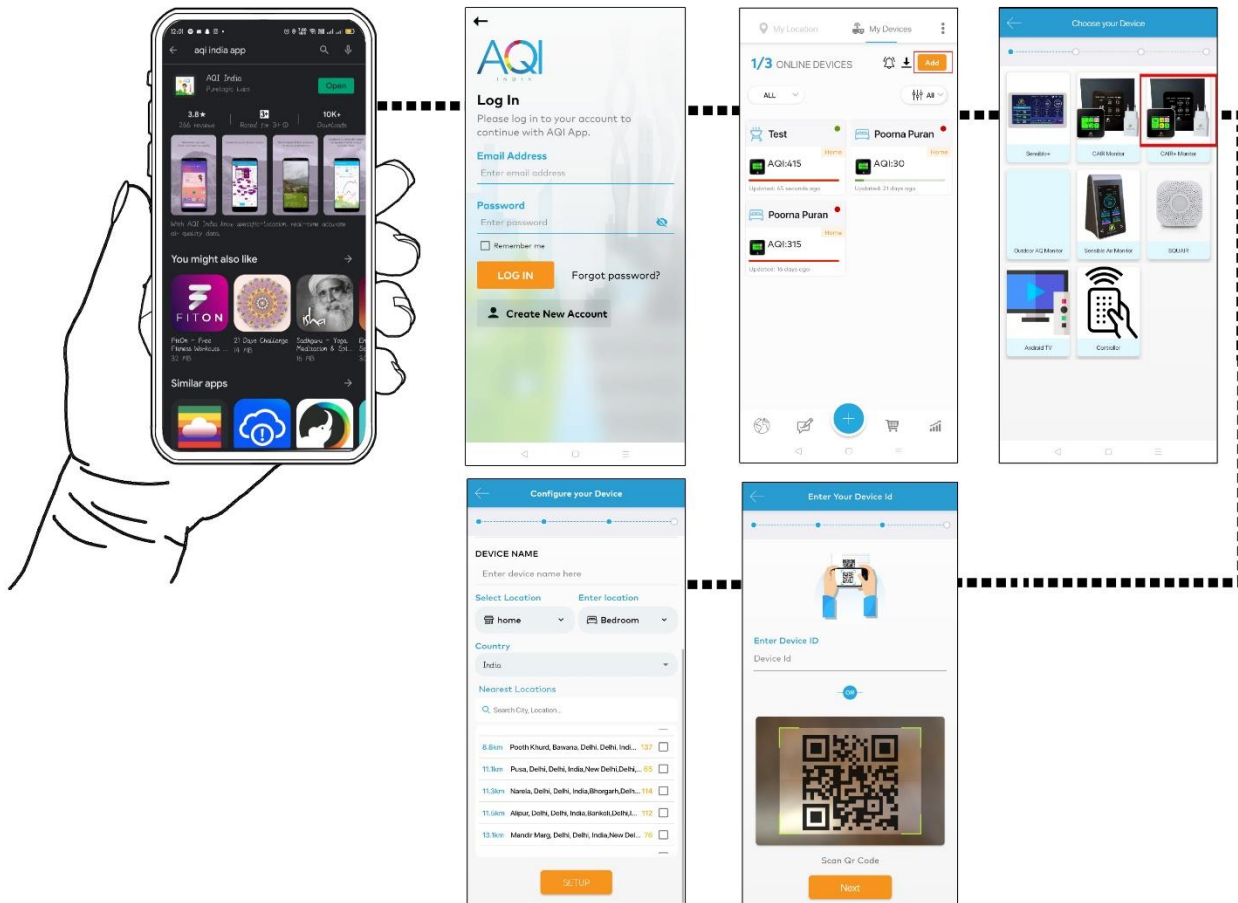
STEP 2- Switch on the device via Power Button behind the display.

STEP 3- A boot screen will appear while checking all the sensors in the background. A display will then appear with the corresponding values of air quality parameters.

To ensure that your CAIR+ is properly calibrated, the monitor should be kept powered on in an intact position for 48 hours.



Connecting to the Wi-Fi and AQI-India Dashboard



STEP 1- Download the AQI India mobile app in your Android/IOS device and complete the sign-up process.

STEP 2- To connect the monitor to the Wi-Fi, press the button on the top of the monitor once to enter the Graph Display. Then, press and hold the button again for three seconds to enter the Configuration Display. The Configuration Display will appear with the details of the device.

STEP 3- Open the app, go to the “My Devices” and click on the “Add” Option.

STEP 4- Select “CAIR+ Monitor” from the set of options available on the screen.

STEP 5- Now, enter the Device ID from the Configuration Display of the monitor or scan the QR Code. Enter the Wi-Fi details and the other required information in the next window, and confirm by pressing “SETUP”.

STEP 6- To exit the Configuration display, click the toggle button again.

You can connect your device(s) to the dashboard to keep tab over your air quality real-time. You can also access the historic data via the app.

Data Insights

Understand your Indoor environment better with CAIR+ readings. CAIR+ should ideally be placed at a height of 0.5-1 meters and should remain intact to obtain reliable data as time passes.

CAIR+ gives an account of the air quality as Air Quality Index (AQI) in terms of parameters such as Temperature, Humidity, Carbon Dioxide (CO₂), Formaldehyde (HCHO), and Particulate Matter (PM 10, PM 2.5, and PM 1).

Press the Toggle Button on the top of the device to enter the Data Display with the concentration of pollutants expressed in micrograms per cubic meter (ug/m³). It also displays the particle count of particulate matter of various sizes per cubic meter.

You can also access the graphical representations of the concentrations of each pollutant (x-axis) with respect to time (y-axis) by a repetitive action of pressing the toggle button.



Product Safety

The product should not be placed in or near any source of water to ensure that it remains in good condition.

The sensors are present on the rear end of the monitor. Therefore, it should never be covered.

Keep the monitor away from direct sunlight. Do not tamper the product with any tools or force.



Notifications

The mobile app can be accessed to receive notifications whenever a specific parameter exceeds the desirable limit.

Click on the “Notifications Settings” in the My Devices section and choose the devices and/or the parameters for which you would like to receive the notifications.



Health Insights

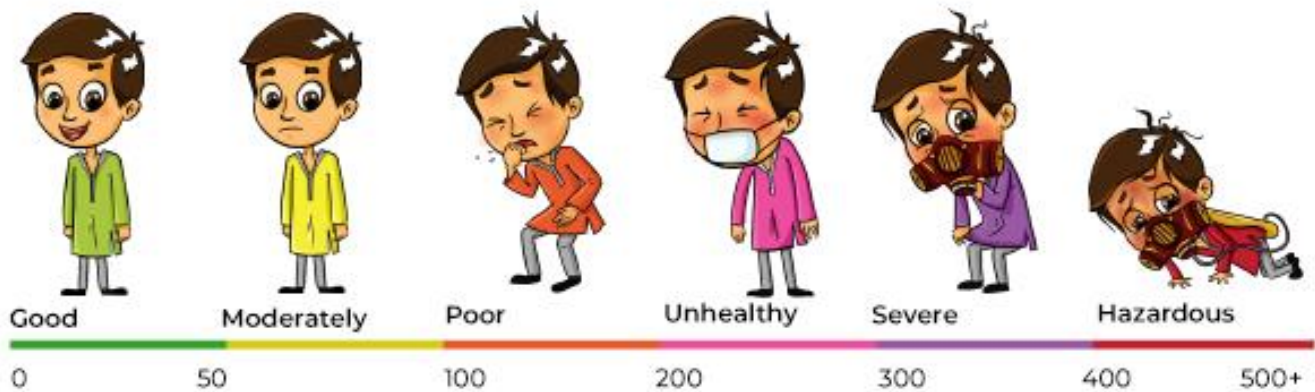
The AQI mobile app provides you with the health insights associated with each range of air quality index.

In the visualizations, you will be able to see the number of days and the duration at which the values are usually higher. You will also find the corresponding health recommendations.

For more information about health and safety, visit the website at www.aqi.in



Understanding the Values



Data visualizations in the AQI app will give you a better understanding of your indoor environment.

Different colors ranging from green to dark red correspond to different ranges of indices and provide an insight into the safety levels of the air.

To learn more, check the national AQI (Air Quality Index) Standards of your country.

Warranty

The monitor comes with a one-year warranty provided by Purelogic Labs India. The warranty covers all defects in the material or performance under normal use.

During the Warranty Period, Purelogic Labs India will repair or replace the product or the parts of the product found defective, at no extra cost, under normal use and maintenance.

The warranty does not cover any problem caused by conditions, malfunctions, or damage other than those by defects in material or manufacture. To know more, contact us at info@purelogic.in.

