
AMBIENT Lite MONITOR

INSTRUCTION MANUAL

GSM/ WiFi Connectivity

CONTACT

Address

706, 7th floor, Crown
heights, Rohini Sec-10,
New delhi-110085, India

Phone

(+91) 73918-73918

Online

Email : info@purelogic.in
Website : www.pranaair.com

TABLE OF CONTENTS

SECTION 01 | GETTING STARTED : KNOW YOUR AMBIENT LITE MONITOR **PAGE 4**

SECTION 02 | GSM CONNECTIVITY **PAGE 6**

SECTION 03 | WIFI CONNECTIVITY **PAGE 9**

SECTION 04 | ADDING THE MONITOR IN THE AQI APP **PAGE 15**

SECTION 05 | INSTALLATION PROCESS **PAGE 20**

SECTION 06 | HOW TO LOG IN/ SIGN UP? **PAGE 22**

SECTION 07 | SAFETY GUIDE **PAGE 27**

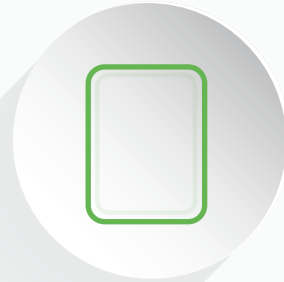
SECTION 08 | SAFETY AND MAINTENANCE **PAGE 29**

SECTION 09 | SERVICE GUIDELINES **PAGE 31**

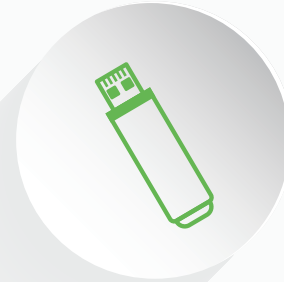
WHAT'S INSIDE **THE BOX**



Ambient Lite Monitor



Junction Box



USB WiFi Dongle



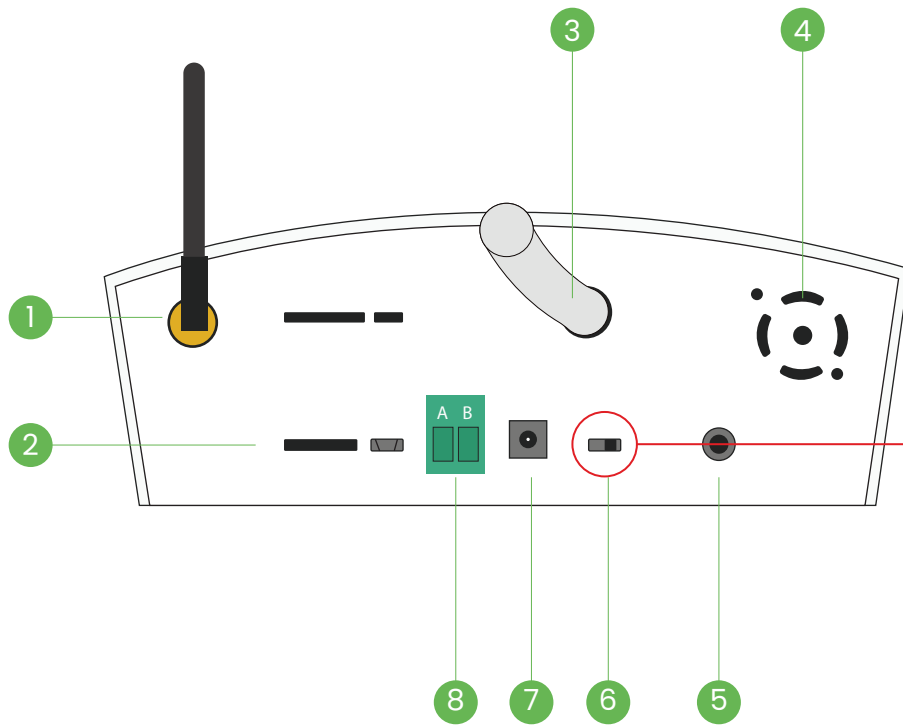
Wall Mounting Plate



Screws

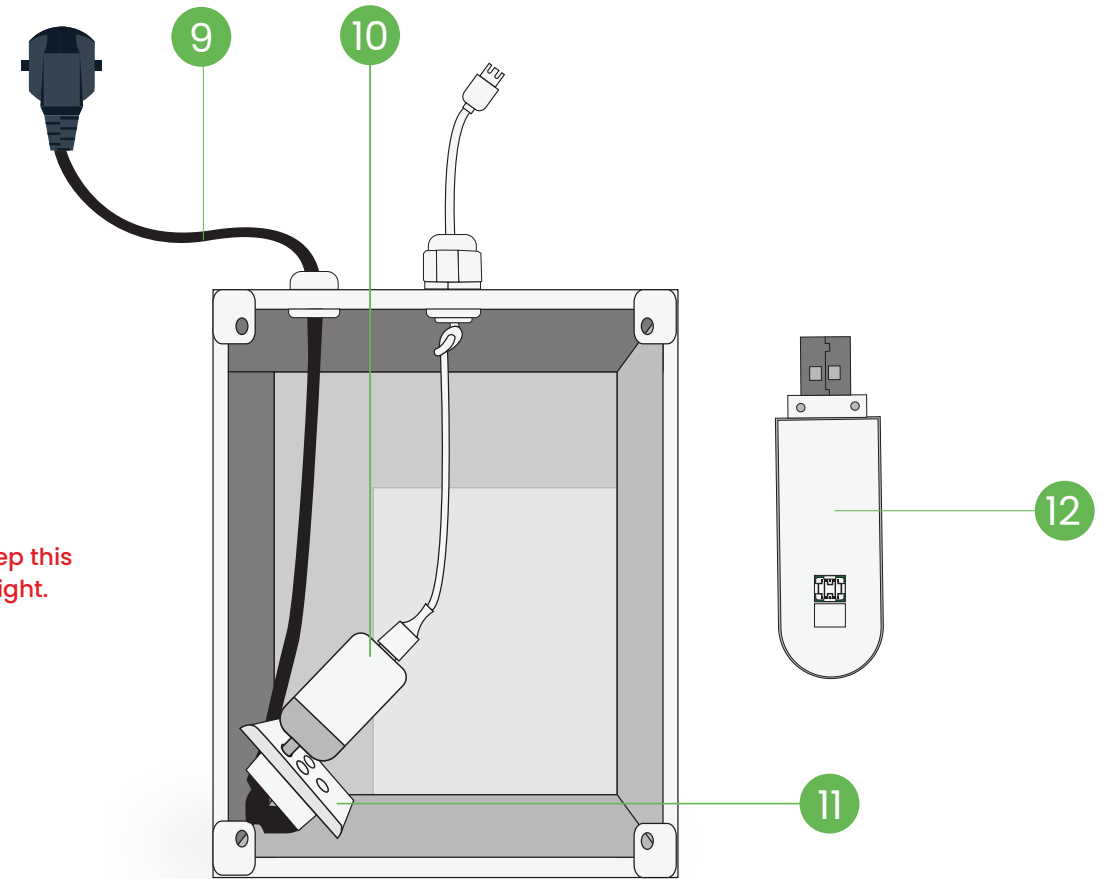
Getting Started : Know your Device

General information about the product that explains the basic functionalities of the device.



Note : Always keep this switch towards right.

Ambient Lite Monitor



Junction Box

1. GPS Antenna

2. Micro SD Card Slot

3. Air Inlet

4. Fan

5. Button

6. Switch

7. DC Power Supply

8. RS-485 Slot

9. Power Cable

10. Adapter

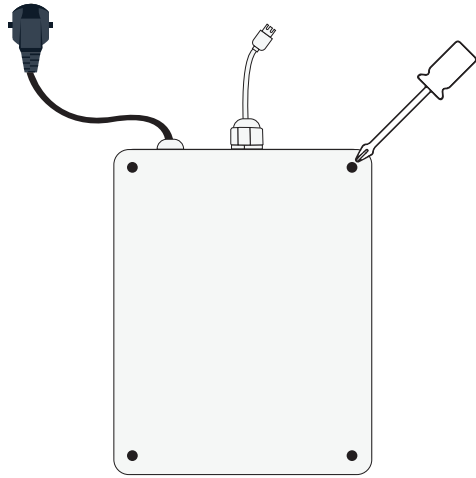
11. Power Socket

12. USB WiFi Dongle

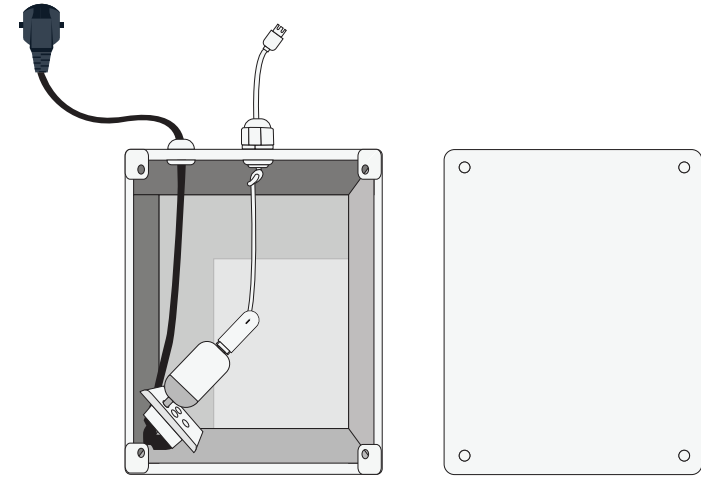
GSM Connectivity

GSM connectivity enables remote monitoring and data transmission, providing real-time updates on air quality levels and alerts, even in areas without Wi-Fi access.

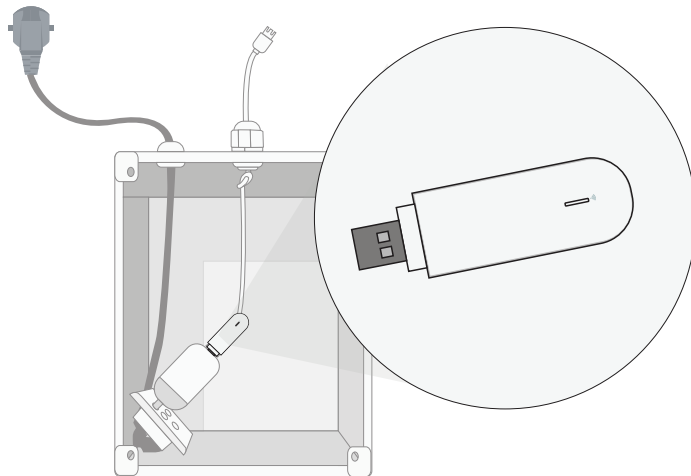
- 1 Use a screwdriver to unscrew all the screws and open the junction box.



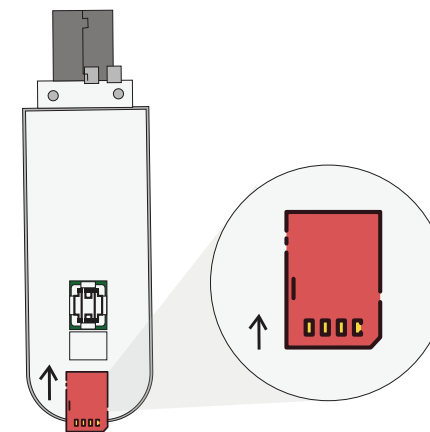
- 2 Once you open the junction box, look for a USB Wifi Dongle inside.



- 3 In the Junction box, unplug the USB dongle from the adapter.

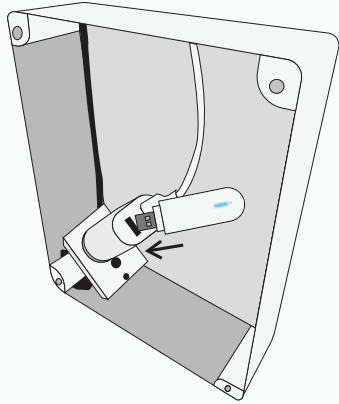


- 4 Now, open the dongle by sliding its back plate and insert the SIM card.



NOTE :
Insert the SIM in the same orientation as shown here.

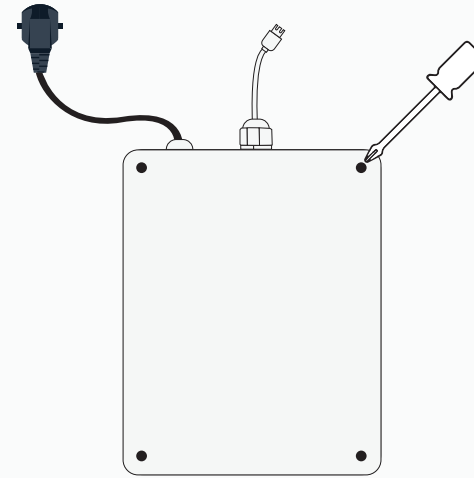
- 5 Once you have successfully inserted the SIM in the dongle, place the USB dongle back in the junction box by plugging it into the adapter.



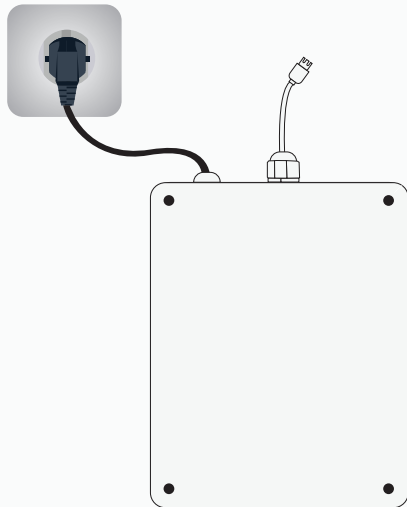
NOTE :

A stable **Blue light** on the Dongle signals successful SIM insertion. If not, please follow the previous step again.

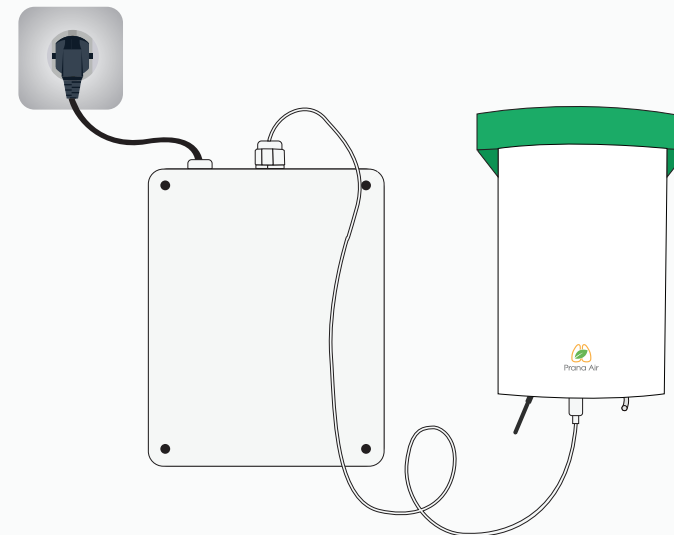
- 6 Screw the junction box again to close it, ensuring that all the screws are tightened properly.



- 7 Plug the power cable into the power socket to activate the dongle inside.



- 8 Look for a micro USB cable on the side of the junction box and connect it to your monitor to power it on.

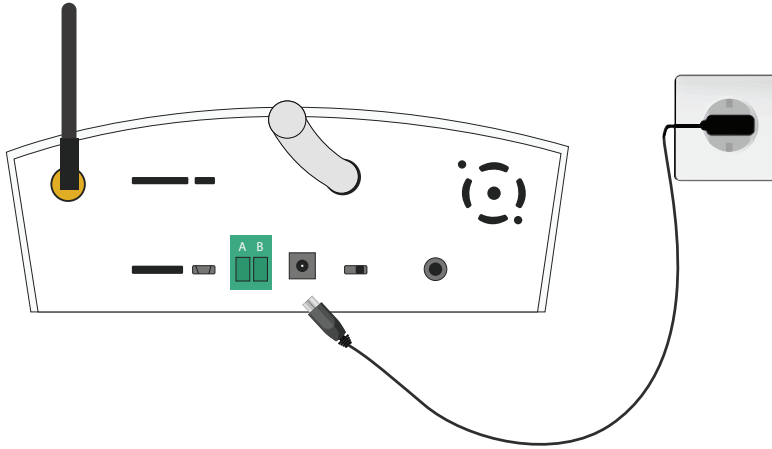


Or

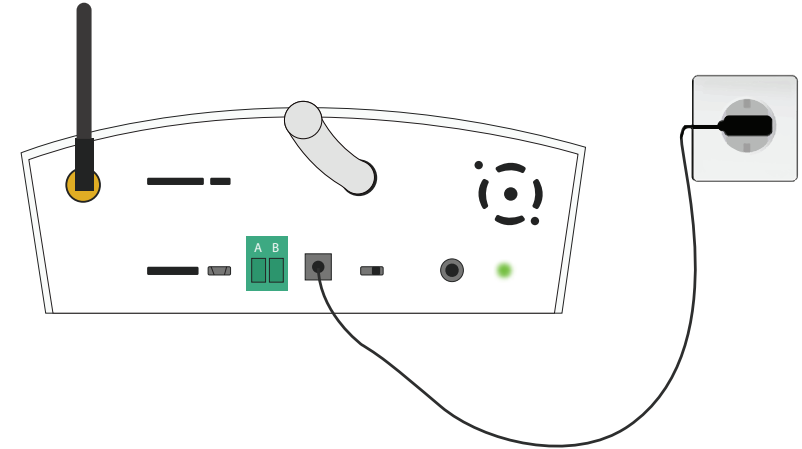
WiFi Connectivity

Establishing a connection between the monitor and a WiFi network allows users to remotely access and view the monitored data.

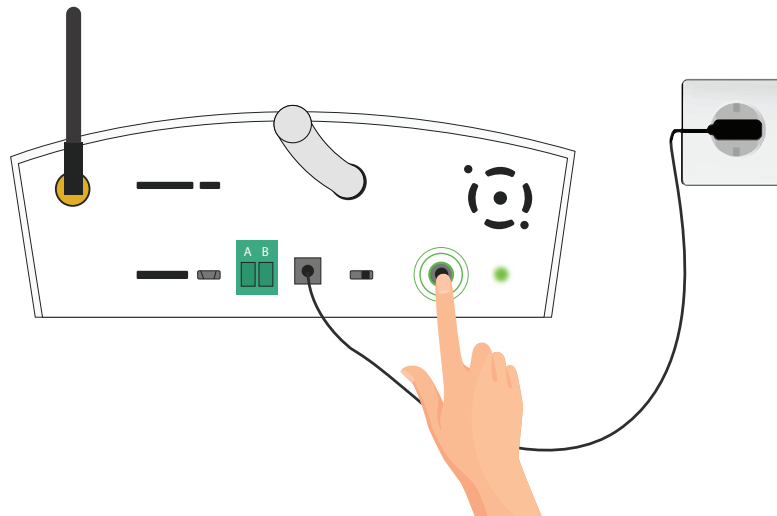
- 1 Connect the DC Power adapter (included in the box) to the monitor and switch on the power.



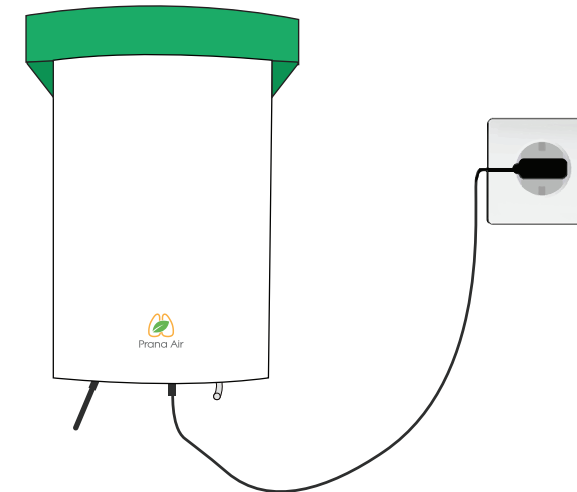
- 2 Once you observe a Green Light blinking at the corner, it indicates that it is now powered on.



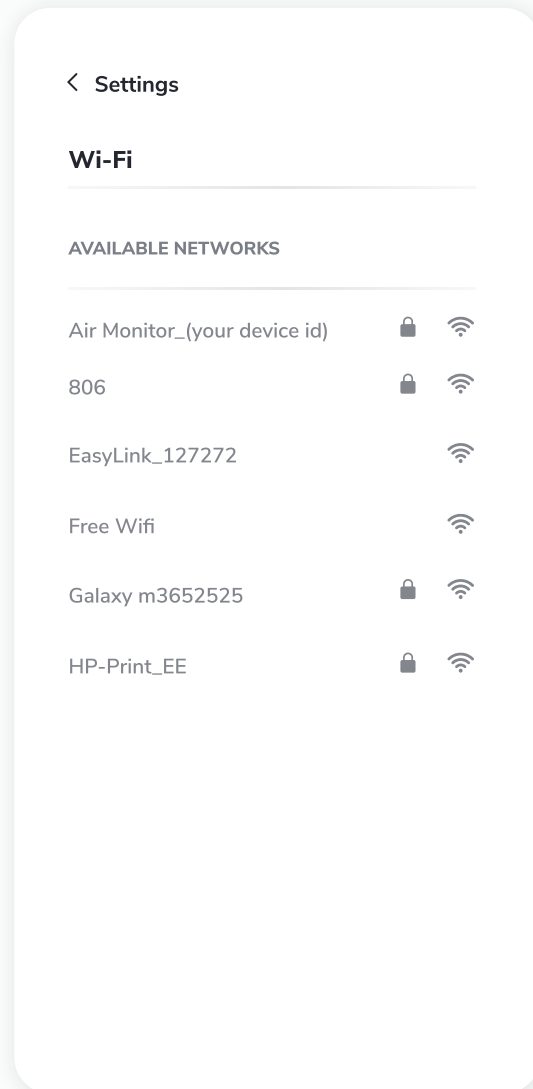
- 3 Press the Button on the right for about 4-5 seconds (approx) until you hear a beep sound.



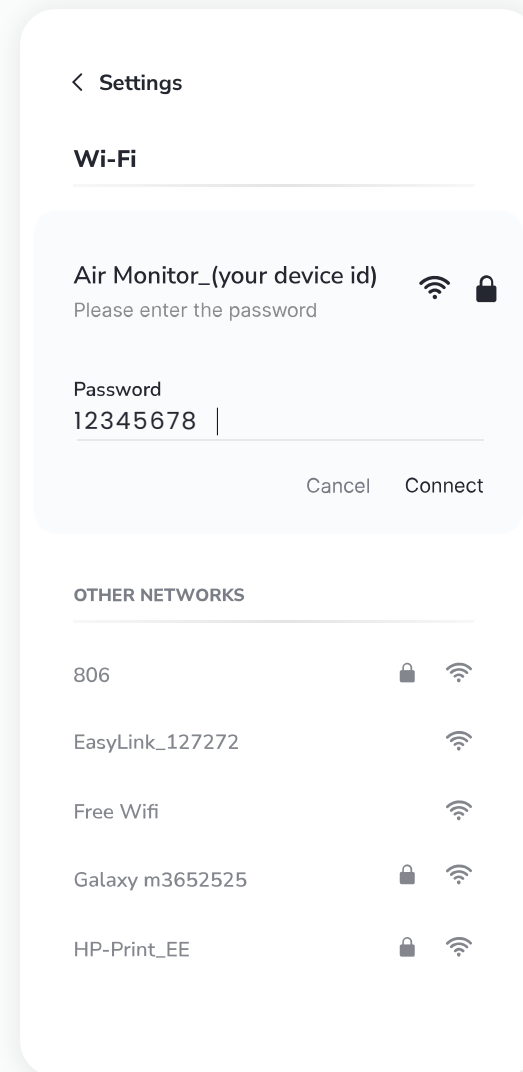
- 4 Make sure there is no obstruction around the Monitor's PM Inlet for accurate sampling.



5 Now go to your mobile's WiFi settings and search for "Air Monitor_(your device ID)".

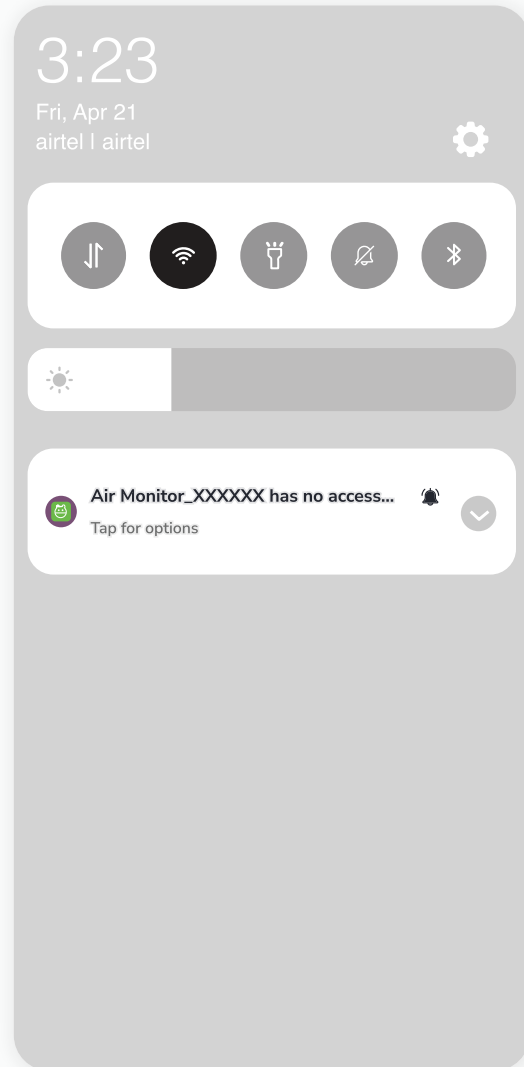


6 Connect to it using the password : "12345678".

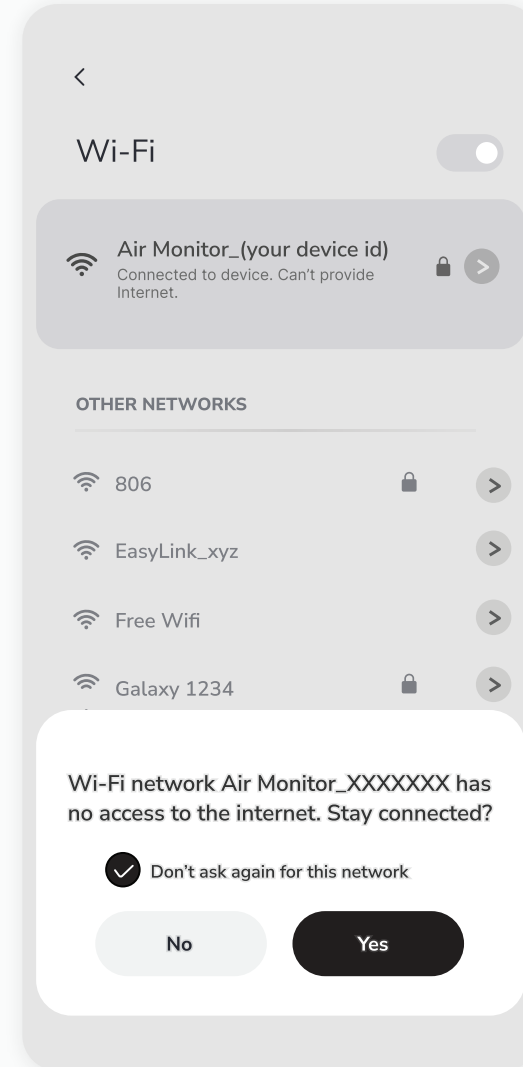


7 A pop-up and/or a notification might appear *(if not then move to step 8)*.

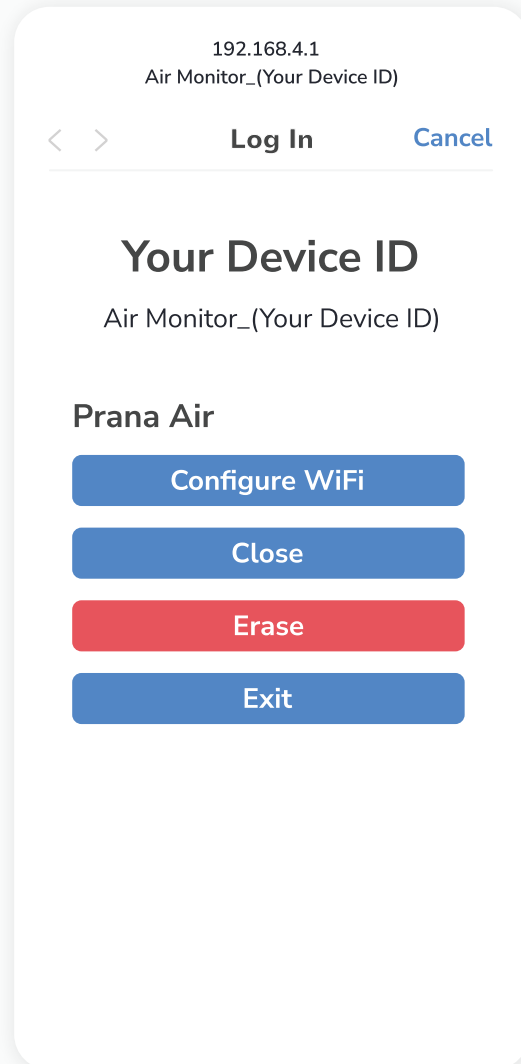
7.1 If the pop-up fails to appear, click on the notification instead.



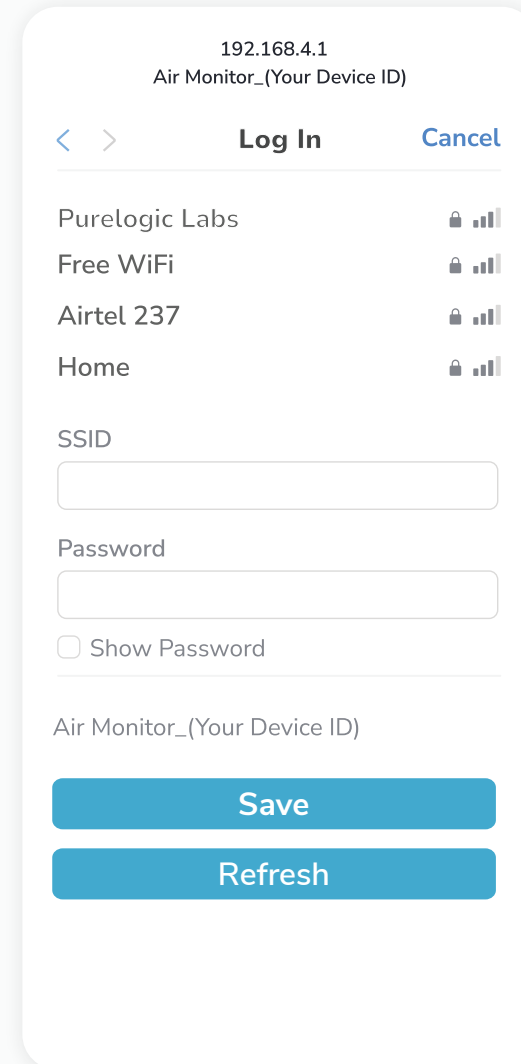
7.2 Select the "Don't ask again" option, followed by clicking the "Yes" button.



- 8 Once you are connected, A WiFi configuration screen will appear on your mobile. Click on “Configure WiFi” from the list.



- 9 A list of nearby WiFi networks that are available will be displayed.



- 10 Choose your preferred WiFi network you wish your device to connect to. Enter the credentials and click on the "Save" button.

192.168.4.1
Air Monitor_(Your Device ID)

< > **Log In** Cancel

Purelogic Labs 🔒 📶

Free WiFi 🔒 📶

Airtel 237 🔒 📶

Home 🔒 📶

SSID

Purelogic Labs

Password

●●●●●●●●●●●●●●●●

Show Password

Air Monitor_(Your Device ID)

Save

Refresh

- 11 A screen will show up, displaying "Saving Credentials". After your credentials are saved, the screen will disappear automatically.

192.168.4.1
Air Monitor_(Your Device ID)

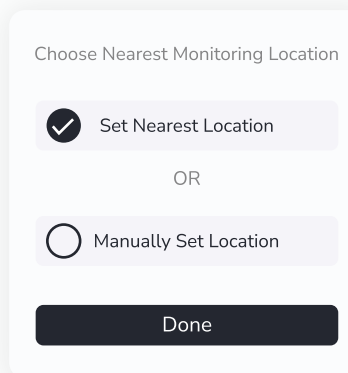
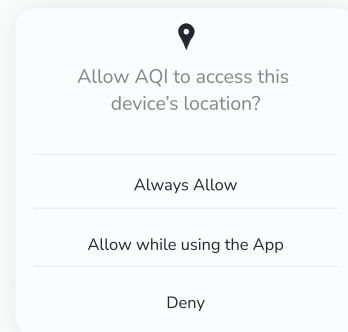
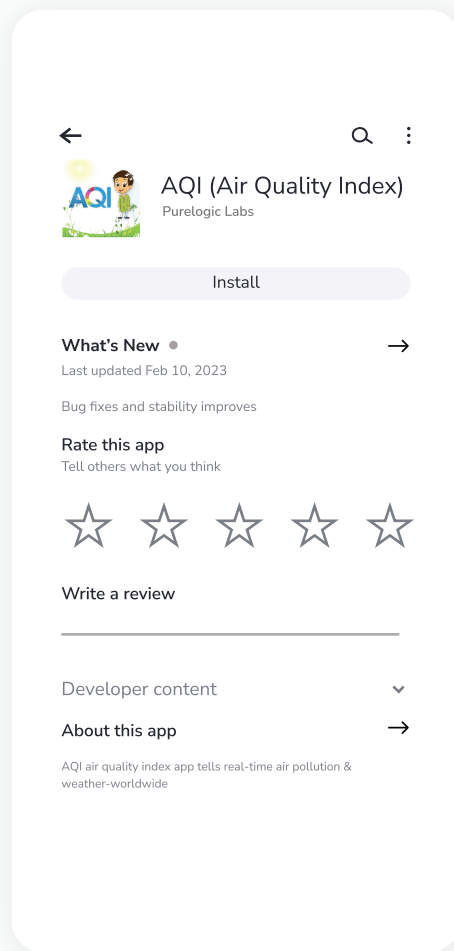
< > **Log In** Cancel

Saving Credentials
Trying to connect ESP to network.
If it fails reconnect to AP to try again.

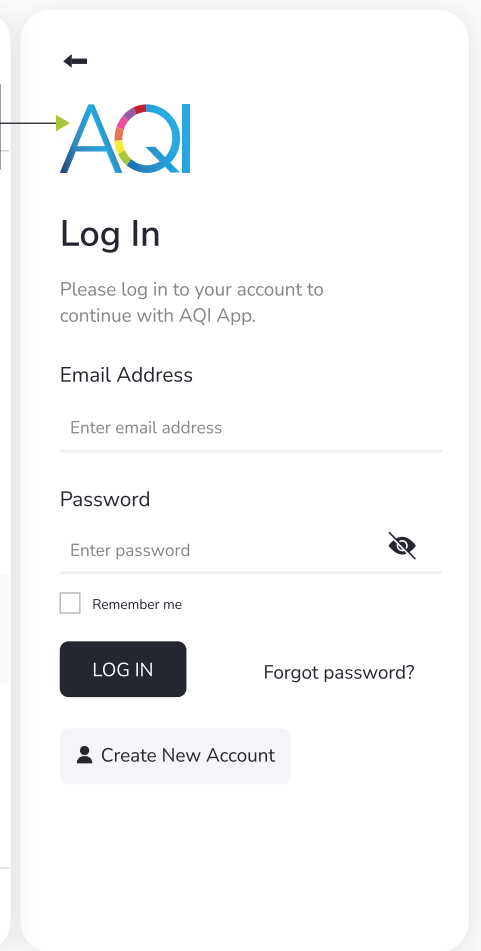
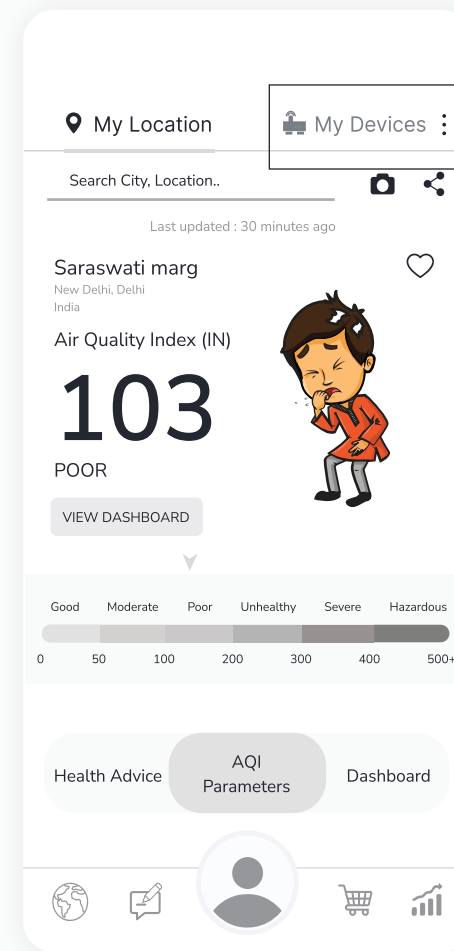
Adding the Monitor in the AQI APP

Upon successfully establishing a GSM or WiFi Connection, please proceed to follow the steps to integrate the monitor into the app for remote data viewing.

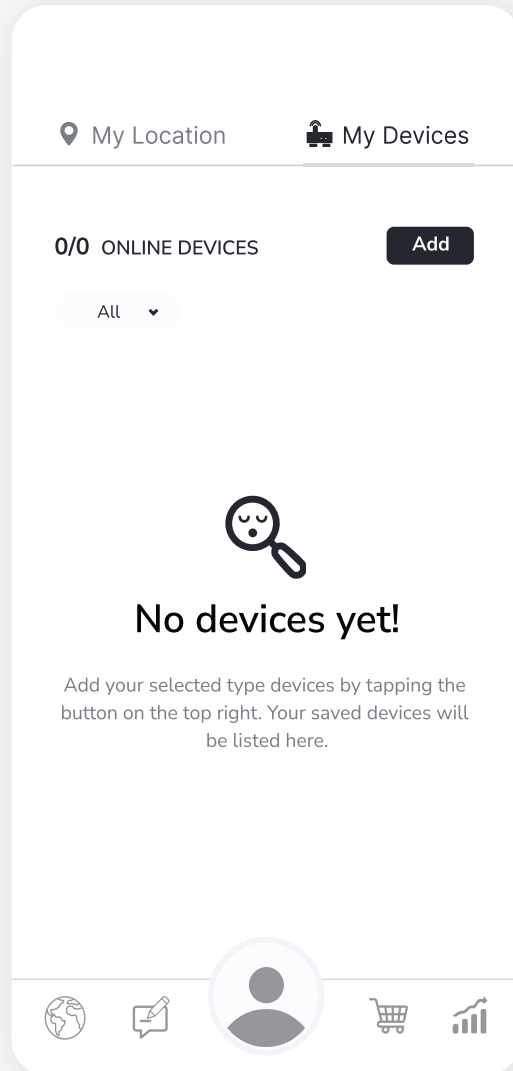
1 Download and install the AQI App on your phone (available on Google Play Store for Android and the App Store for iOS). Once installed, open the app and grant all the necessary permissions.



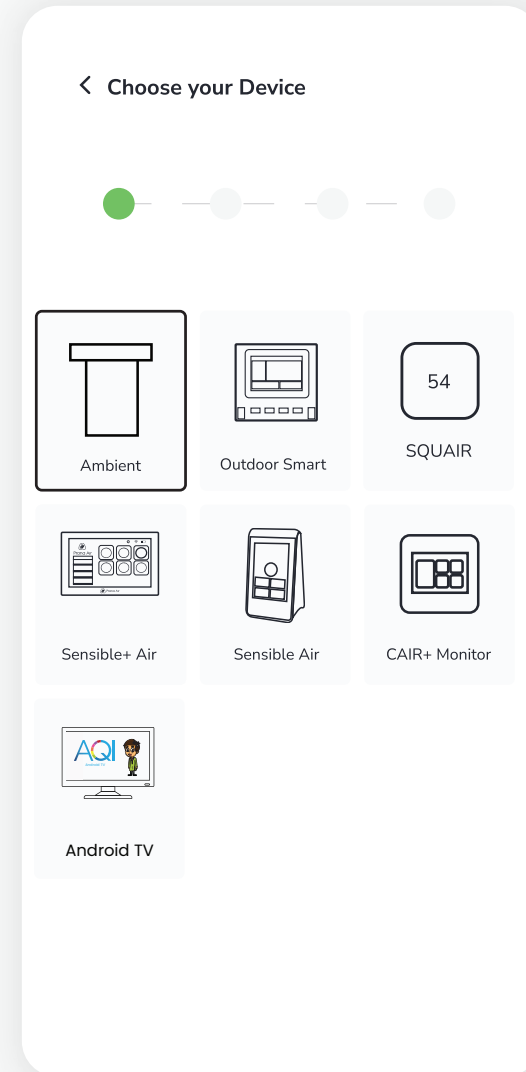
2 Click on "My Devices" to Sign up for creating a new account or Log in if you already have one. For Login/ Sign up procedure, refer to Page 23.



- 3 Once logged in, Go to "My Devices" and then click on the "Add" button.



- 4 Then select "Ambient" under the 'Choose your Device' section.



- 5 Scan the QR Code or manually enter the device ID. Then click "Next".

← Enter Your Device Id

● ● ● ●

Enter Device ID

Device Id

OR

Scan Qr Code

Next

- 6 Add all the necessary details and then click on the "Setup" button.

← Configure your Device

● ● ● ●

Name your device

DEVICE ID XXXXXXXXXXXXXXXX

DEVICE TYPE Indoor

DEVICE NAME

Ambient Lite

Select Location Office

Enter Location Home

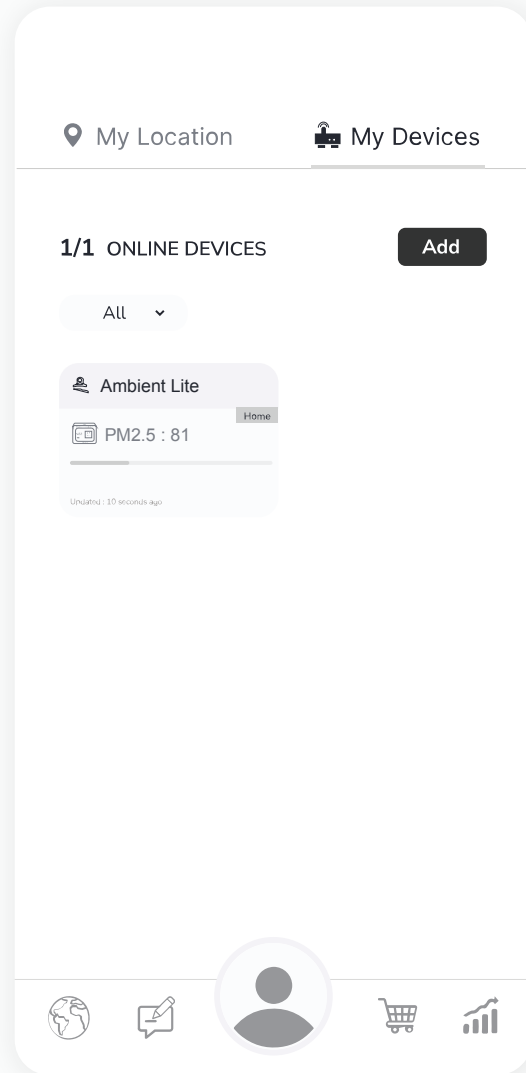
Country India

State Delhi

City New Delhi

Setup

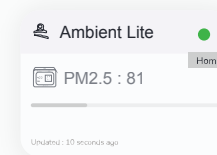
7 Your device is added successfully. You can see your added device under the "My Devices" section of the AQI App. Check the device's online status after 5 minutes. If offline, verify the power source, and WiFi connection.



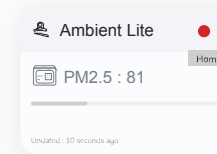
NOTE:

Please ensure the device is successfully added to the AQI app and has established an online connection.

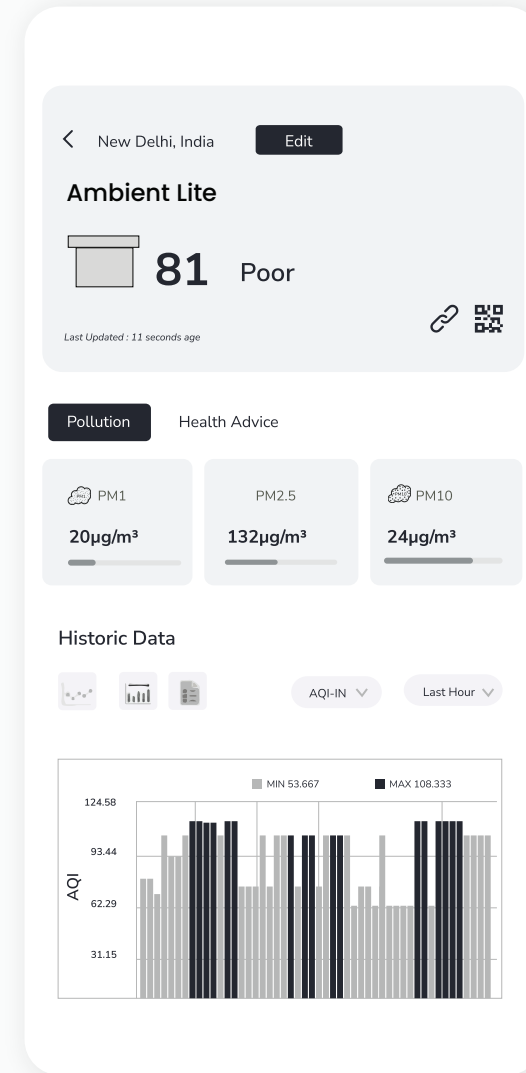
Status :
Device Online



Status :
Device Offline



8 Click on your device card in "My Devices" to get a detailed view of the monitored data. Click on the "Edit button" to edit the details of the device.



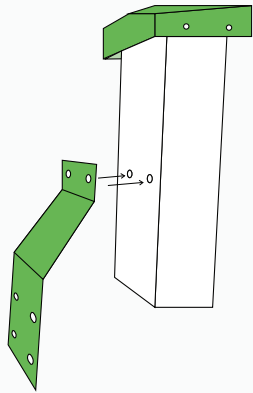
NOTE: The device will continue to display as online for 30 minutes even after going offline.

Installation Process

The installation process assists the users to set up the device correctly, minimizing errors, and maximizing the effectiveness of the monitor.

Wall Mounting

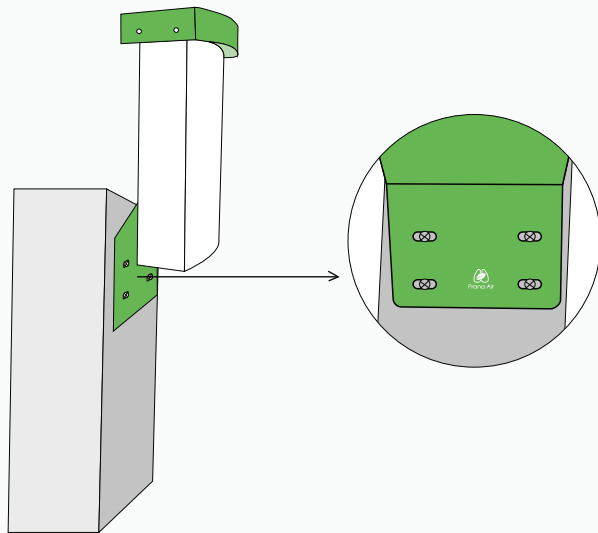
- 1 Align the holes on the plate with the holes on the monitor to position the plate as shown in the diagram.



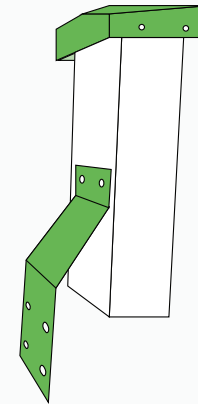
NOTE :

Ensure that the back plate is installed exactly as shown in the image provided.

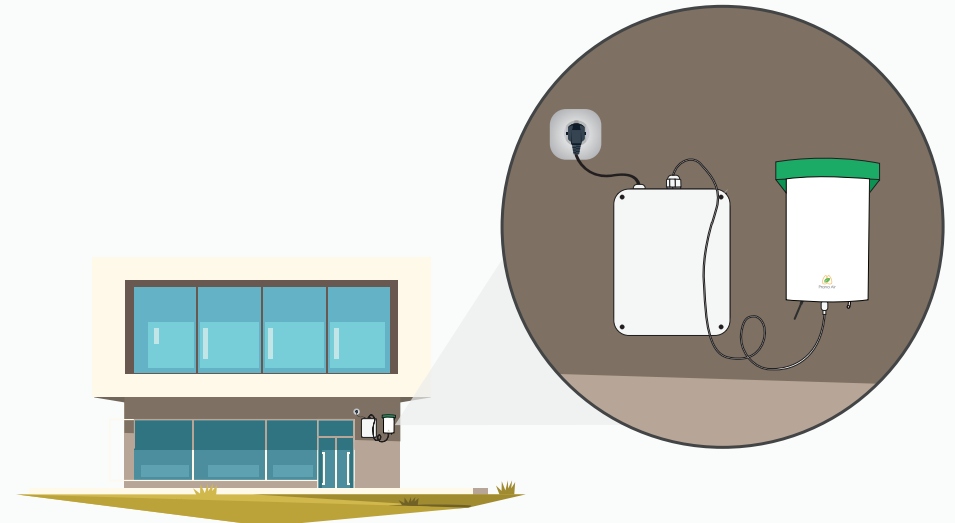
- 3 To obtain an accurate air sample, it is important to ensure that there is no wall or obstruction behind the monitor.



- 2 Insert the screws to attach the plate to the monitor. Ensure that the plate is securely placed to avoid any harm to the device.



- 4 Align and position the device securely using screws, ensuring there is no obstruction behind the monitor for an accurate air sample.

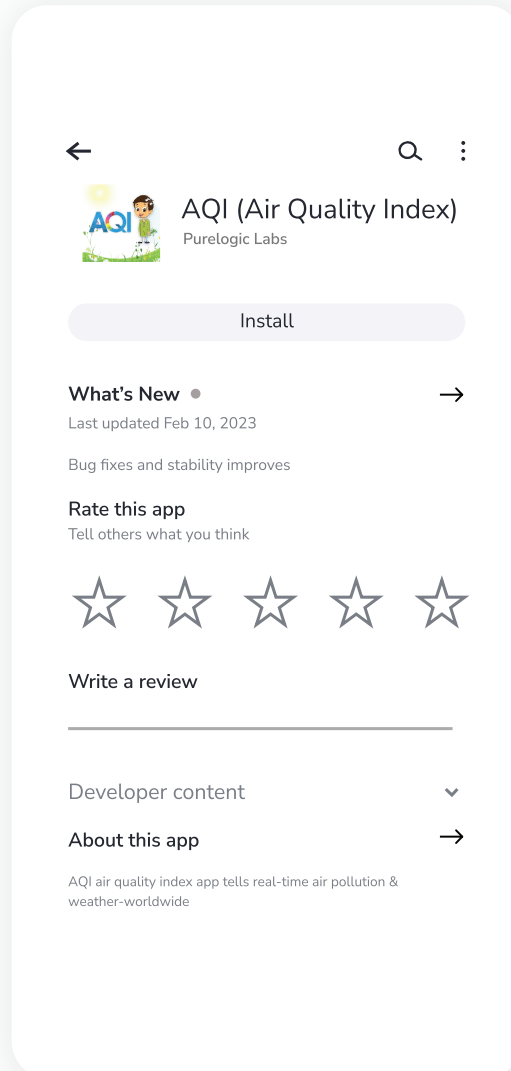


How to log in/ sign up?

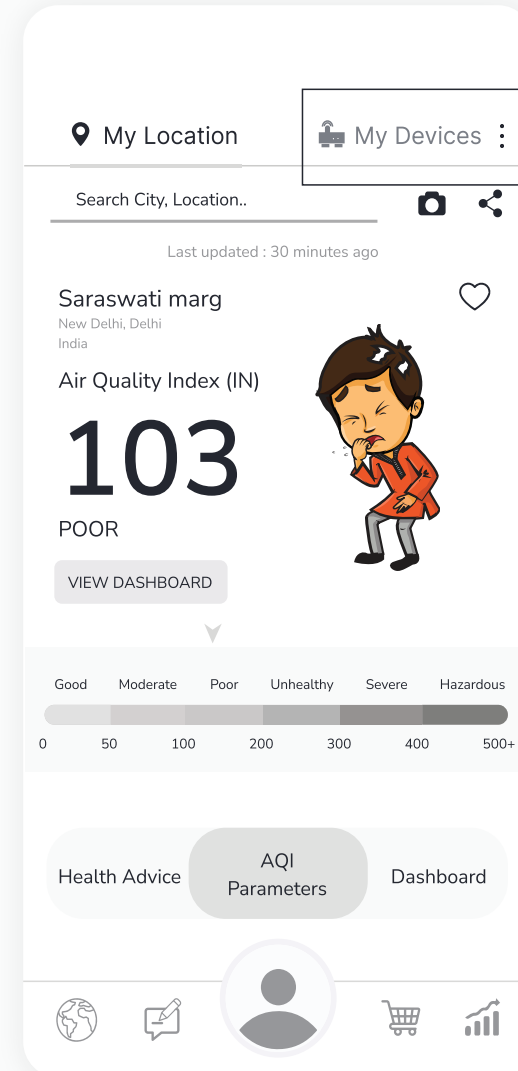
To provide access control, track monitored data, personalize the experience, and facilitate communication between users and the devices.

Sign up :

- 1 Install the AQI app on your smartphone.



- 2 Open the app and click on "My Devices" from the top right corner of the screen.



- 3 Click on the "Create New Account" button.

←

AQI

Log In

Please log in to your account to continue with AQI App.

Email Address

Enter email address

Password

Enter password

Remember me

LOG IN [Forgot password?](#)

Create New Account

- 4 Add the necessary details. Click on the checkbox after reading all the terms and conditions and privacy policies. Then click on the "Sign Up" button.

←

AQI

Create Account

Please sign up to your account to continue with AQI App.

Username

Enter username

Email Address

Enter email address

Password

Enter password

Mobile No

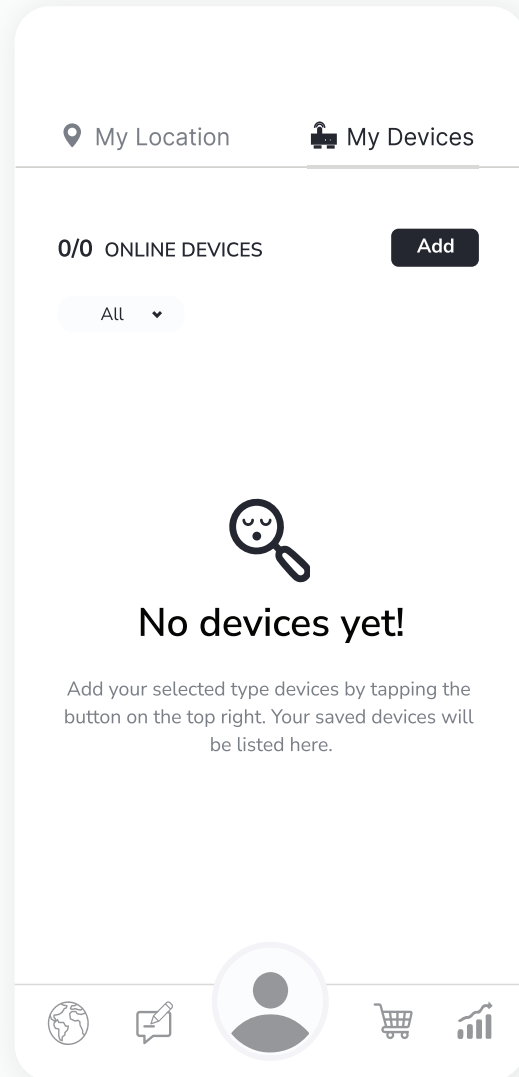
91+ Enter mobile

Yes, I agree with AQI [Terms of Use](#) and [Privacy Policy](#)

SIGN UP

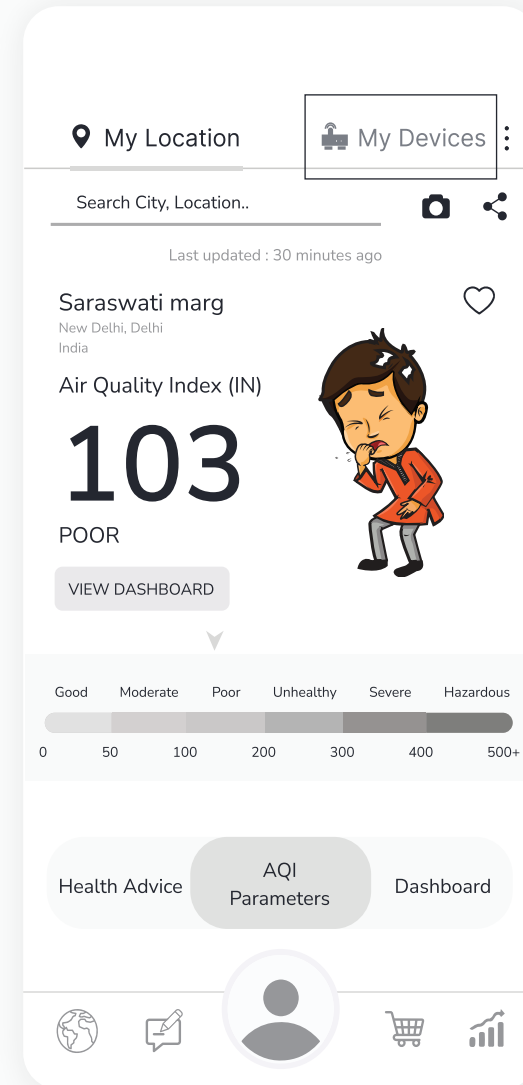
[Already have an account](#)

- 5 Your account is created. You will be redirected to 'My Devices' section where you can add different devices.




Login :

- 1 Open the app and click on "My Devices" from the top right corner of the screen.



- 2 Enter your credentials and then click on the "Log in" button.

←




Create Account

Please sign up to your account to continue with AQI App.

Username
Enter username


Email Address
Enter email address

Password
Enter password 

Mobile No
91+ Enter mobile

Yes, I agree with AQI [Terms of Use](#) and [Privacy Policy](#)

SIGN UP


 Already have an account

- 3 You have now successfully logged in to your account. You can easily add devices and check the data remotely 24*7.

📍 My Location 📱 My Devices






0/0 ONLINE DEVICES **Add**

All ▾



No devices yet!

Add your selected type devices by tapping the button on the top right. Your saved devices will be listed here.

Safety Guide

To ensure safe and proper usage of this product, please refer to the following safety guide before operating the device.

- 1 Read and follow the user manual before using the device.
- 2 Avoid exposing the device to extremely high temperatures, and humidity.
- 3 To avoid damage, keep the device away from water and other liquids. It can damage the device.
- 4 Take appropriate precautions if you are aware of any potential hazards or risks related to the specific environment you are monitoring.
- 5 **Preventive measures:** If the gadget detects high levels of pollutants or other potentially hazardous substances, take precautionary measures such as opening windows or leaving the area.
- 6 When connecting to the wifi network and the AQI app, kindly read the instructions carefully.
- 7 It is important to only use Prana Air repair services to fix the device.
- 8 **Accessories:** The user has the option to use an alternative adapter (with the same power rating) and USB cable.

NOTE:

The user can opt for an alternative 5V/2.5A adapter.

Safety and maintenance

The safety and maintenance section of this product manual provides important information on how to use and maintain the device in a safe and reliable manner.

- 1 Having a comprehensive understanding of the safety and maintenance instructions for the device can enable you to use the device more safely and efficiently, and help to extend its lifespan as much as possible.
- 2 Make sure to turn on the device properly.
- 3 The device is not waterproof. Please keep it and all the accessories dry.
- 4 If the air quality monitor is not functioning properly, do not attempt to repair it yourself.
- 5 Store the air quality monitor in a cool, dry place when not in use. This will help prevent damage to the device and extend its lifespan.
- 6 Do not drop, shake, or knock the device. Violent usage may damage the screen or the internal circuit.

Service Guidelines

This section outlines the recommended maintenance procedures and service requirements for ensuring the optimal performance and longevity of the device.

A. Warranty Terms

- 1 The device comes with a 1-year warranty against manufacturing defects.
- 2 A valid proof of purchase is required to be eligible for repairs or replacements.
- 3 Warranty will be void in case of physical damage.

B. Sending and Retrieving the Device for Repair

- 1 The customer must provide the necessary information, such as name, contact number, and fault description, to complete the repair work order.
- 2 If payment is made by cheque, the device can only be retrieved after the cheque has cleared.

C. Warranty Description

- 1 The warranty covers only the device and its accessories under normal usage. No warranty will be provided if the device is damaged due to any of the following reasons:
 - 1.1. Warranty period has expired.
 - 1.2. No valid proof of purchase is provided, or the purchase date is beyond the warranty period.
 - 1.3. The content on the valid proof of purchase is different from the actual product or has been altered.
 - 1.4. The device is damaged due to improper usage or maintenance.
 - 1.5. The device is damaged due to moisture, liquids, or falling, or has been repaired or disassembled by an unprofessional.
 - 1.6. Damages due to force majeure.1.6. Damages due to force majeure.
 - 1.7. Normal wear and tear of the device (such as outer cover, buttons, and screen).
- 2 Both national and international services can be availed only at Prana Air's office.
- 3 All replaced parts, components, and accessories during warranty services will be kept by the Prana Air service center.



Prana Air

Visit us :

www.pranaair.com