

Ambient Pro

# INSTRUCTION MANUAL

---

GSM / WiFi Connectivity

---

## CONTACT

### Address

706, 7th floor, Crown  
heights, Rohini Sec-10,  
New delhi-110085, India

### Phone

(+91) 73918-73918

### Online

Email : [info@purelogic.in](mailto:info@purelogic.in)  
Website : [www.pranaair.com](http://www.pranaair.com)

---

---

# TABLE OF CONTENTS

SECTION 01 | GETTING STARTED : KNOW YOUR MONITOR

**PAGE 4**

SECTION 02 | GSM CONNECTIVITY

**PAGE 6**

SECTION 03 | WIFI CONNECTIVITY

**PAGE 11**

SECTION 04 | ADDING THE MONITOR IN THE AQI APP

**PAGE 15**

SECTION 05 | HOW TO LOG IN/ SIGN UP?

**PAGE 20**

SECTION 06 | SAFETY GUIDE

**PAGE 25**

SECTION 07 | SAFETY AND MAINTENANCE

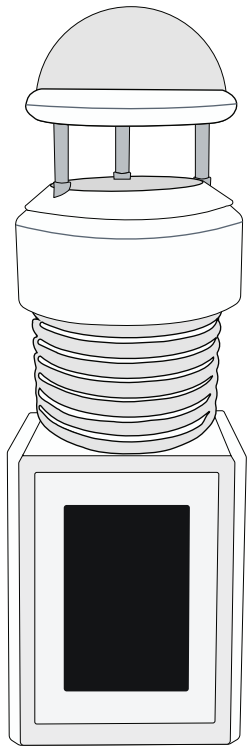
**PAGE 27**

SECTION 08 | SERVICE GUIDELINES

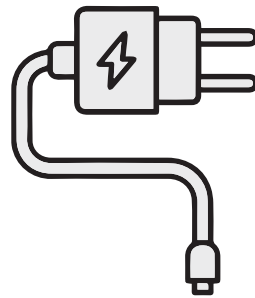
**PAGE 29**

---

WHAT'S INSIDE  
**THE BOX**



Ambient Pro

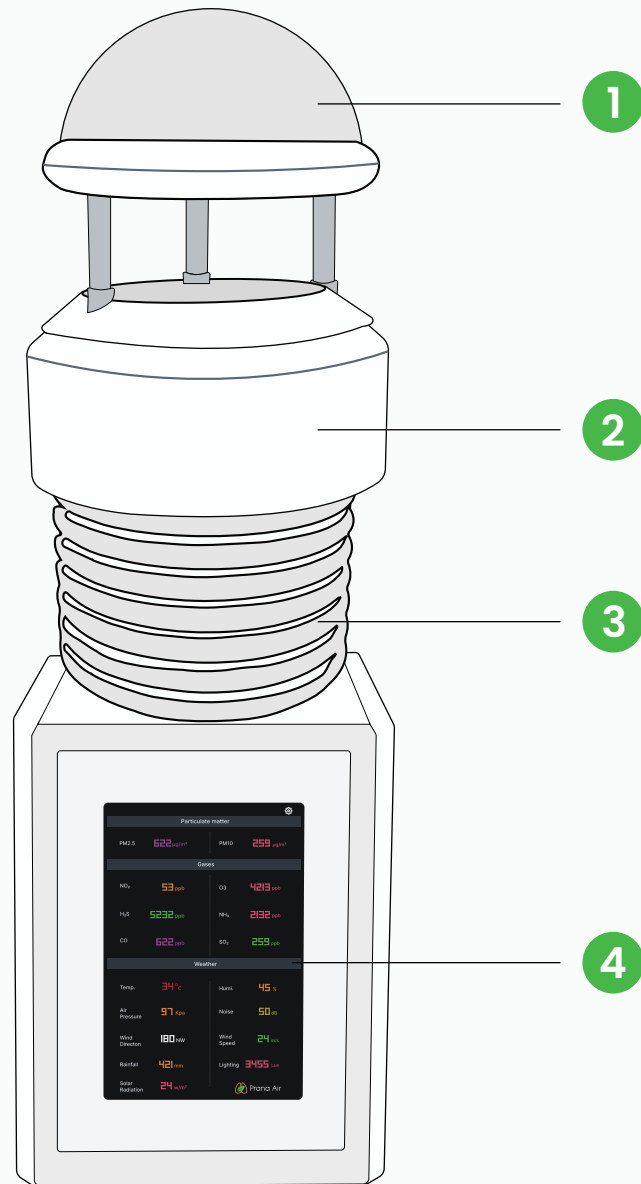


Adapter

# Getting Started : Know your Device

---

General information about the product that explains the basic functionalities of the device.



## For your reference :

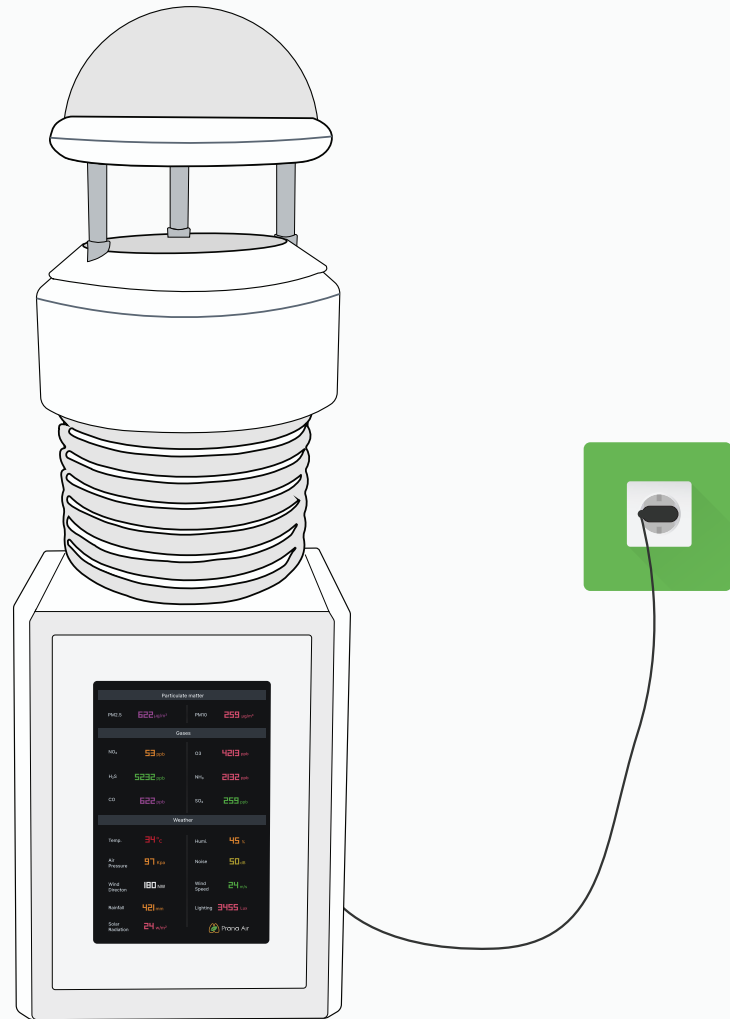
1. Measures weather parameters such as LUX, Wind Speed, Wind Direction, UV and Rainfall.
2. Measures Gases such as SO2, NO2, CO, O3, TVOCs, H2S and NH3.
3. Measures Noise and PM (1,2.5 & 10), Temperature, Humidity and Pressure.
4. LED Data Display (7 inches)

# GSM Connectivity

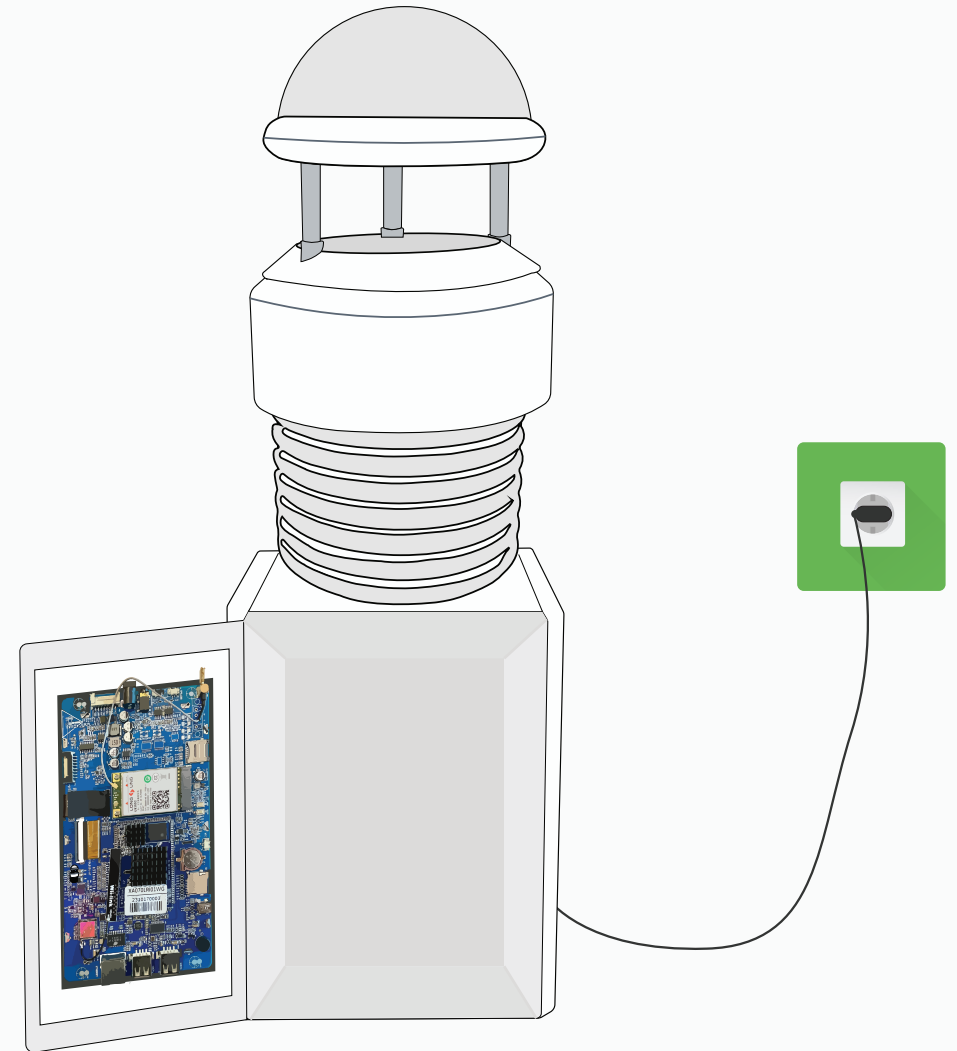
---

GSM connectivity enables remote monitoring and data transmission, providing real-time updates on air quality levels and alerts, even in areas without Wi-Fi access.

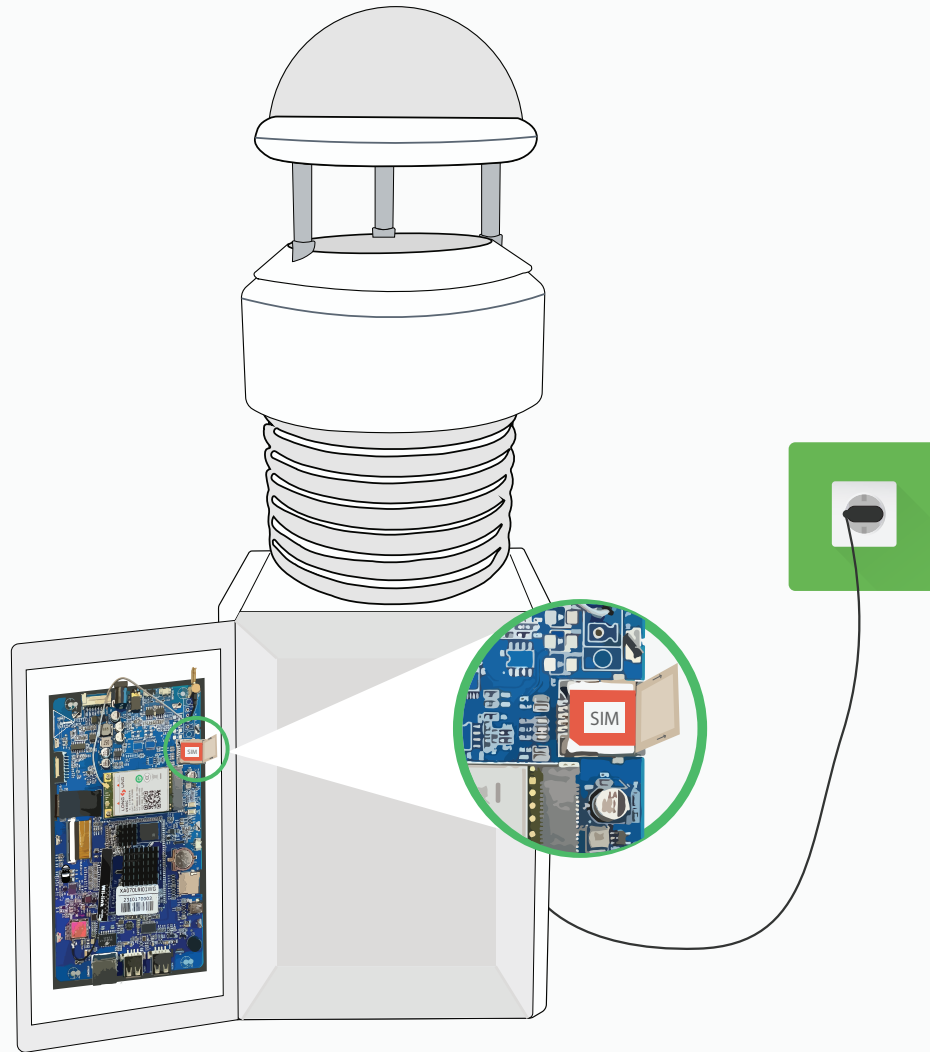
- 1 Connect the adapter (included in the box) to the monitor and switch on the power.



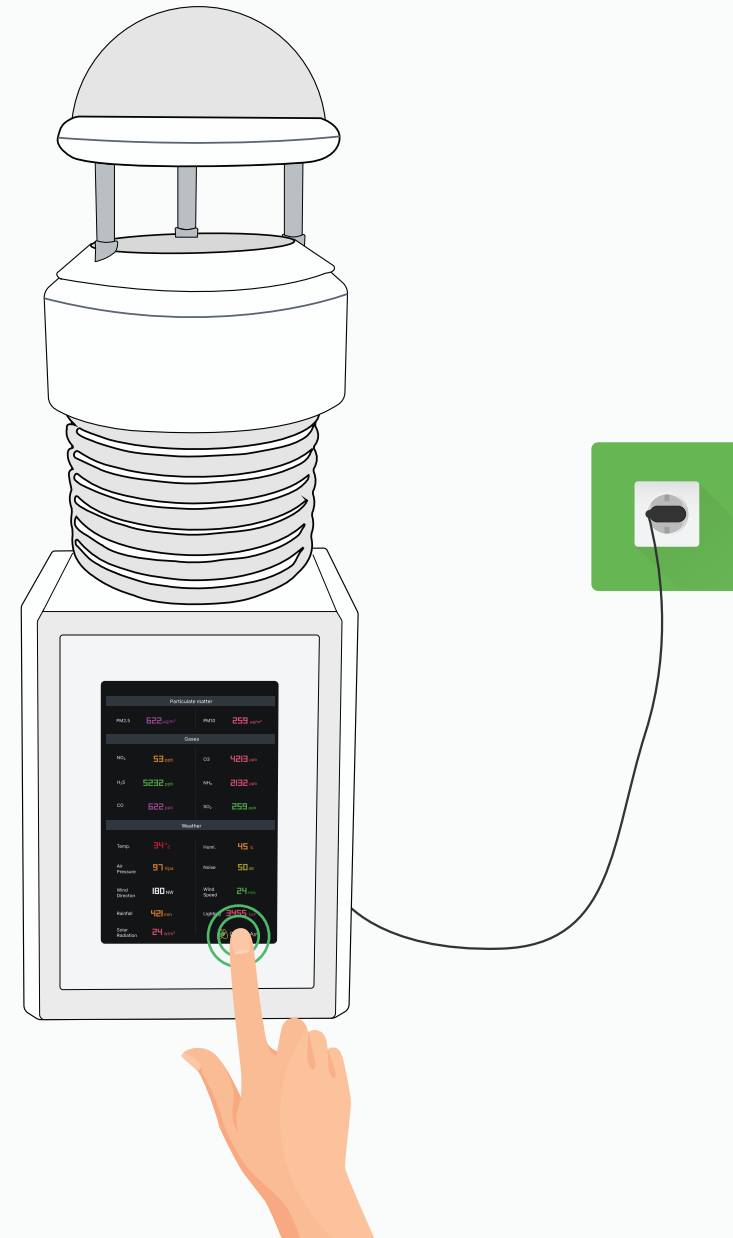
- 2 Now, Pull the front panel of the monitor towards you to open it.



- 3 You will find a PCB at the back of the panel , look for a **SIM card** slot there and insert the SIM in the slot.



- 4 Tap the “**Prana Air logo**” located at the bottom right corner of the screen at least 10-12 times.



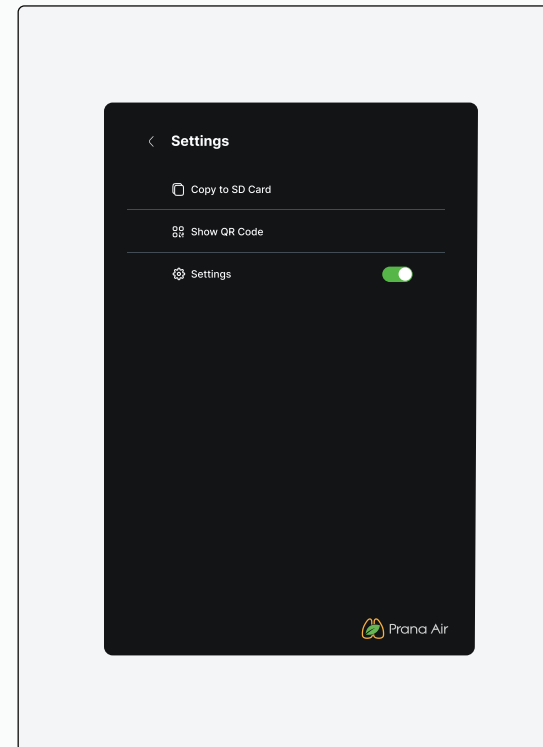
NOTE : Insert the SIM Card in the slot as mentioned in the figure above.



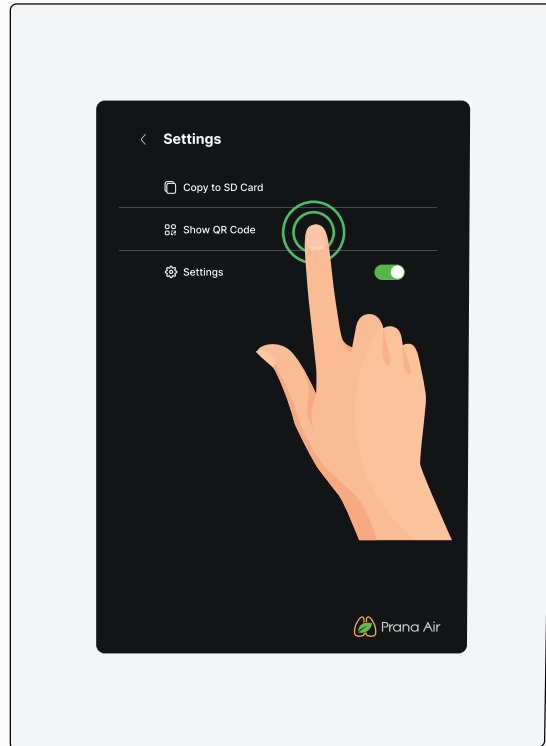
5 A settings icon will appear on the top right corner of the screen. Tap on the "Settings" icon.



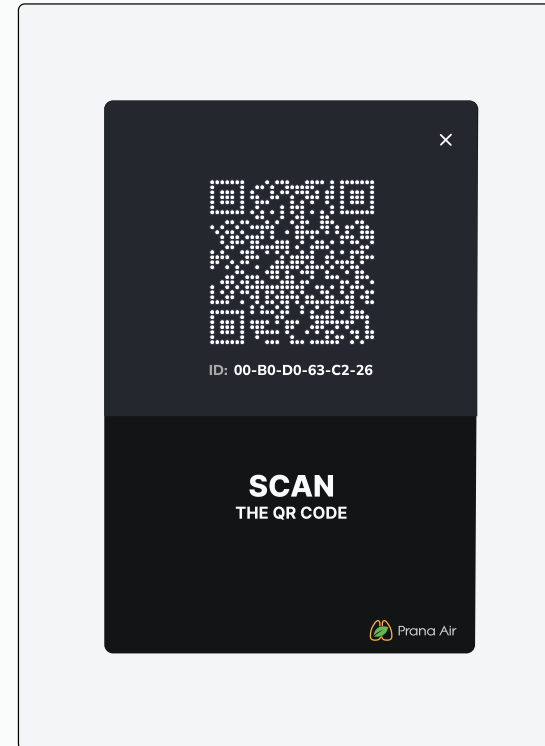
6 A list of settings will appear.



7 Select **"Show QR Code"** from the list.



8 The **Device ID** and **QR code** will be displayed on the screen. Follow the next steps to add the monitor in the AQI app.



*NOTE : After successfully establishing a GSM connection, skip all other pages and proceed directly to page 15 to add the monitor in the AQI app.*

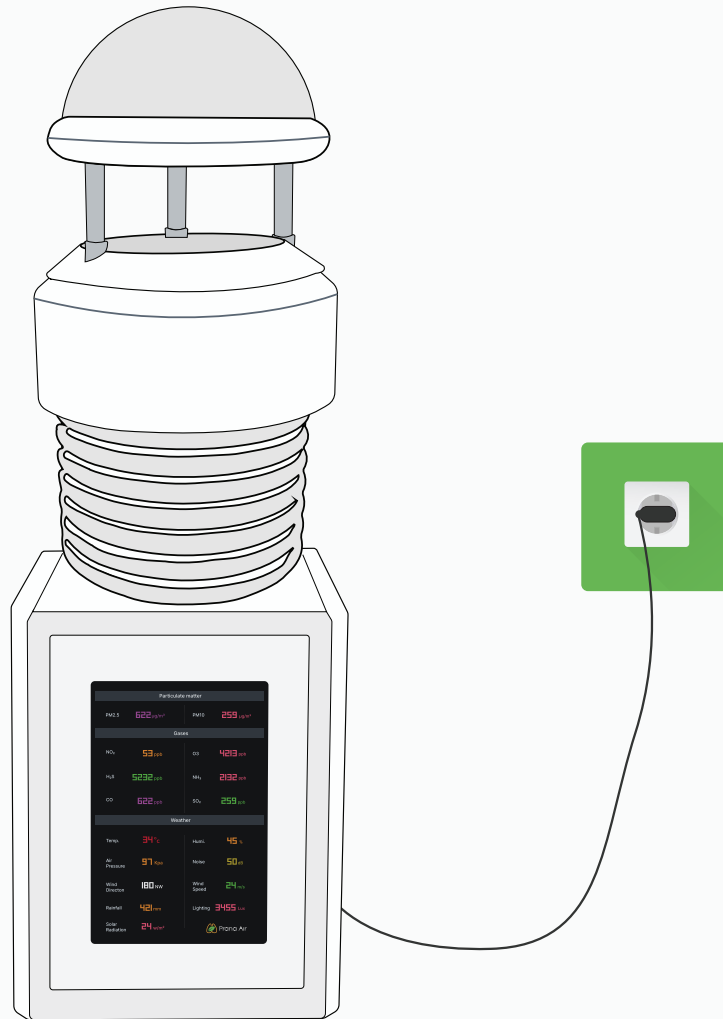
# Or

## Wi-Fi Connectivity

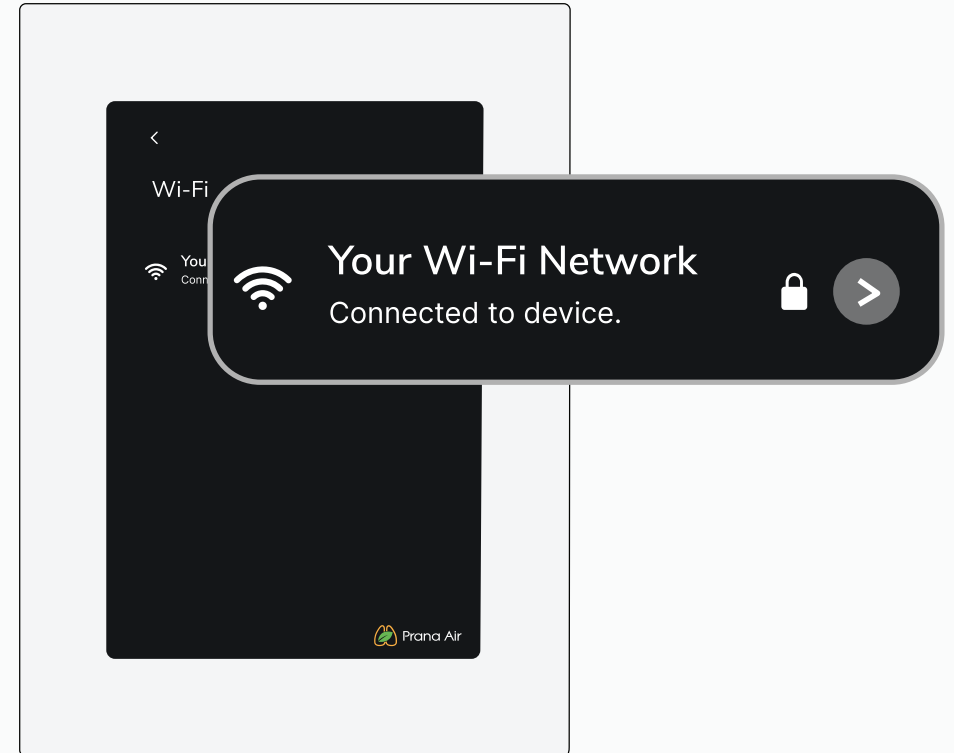
---

Establishing a connection between the monitor and a WiFi network allows users to remotely access and view the monitored data.

- 1 Connect the adapter (included in the box) to the monitor and switch on the power.



- 2 Now, open the "Wifi Settings" screen. From there, find your nearby wifi network and connect to it.



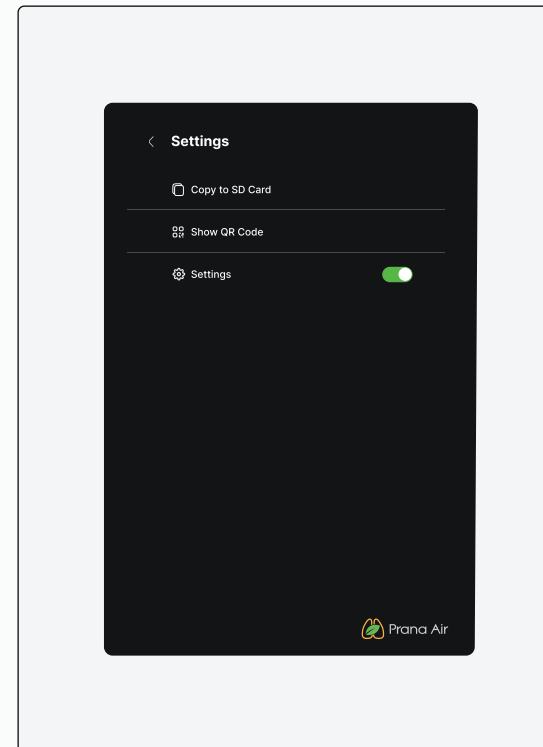
3

Keep tapping the “Prana Air logo” until you see the settings icon on the top right corner.

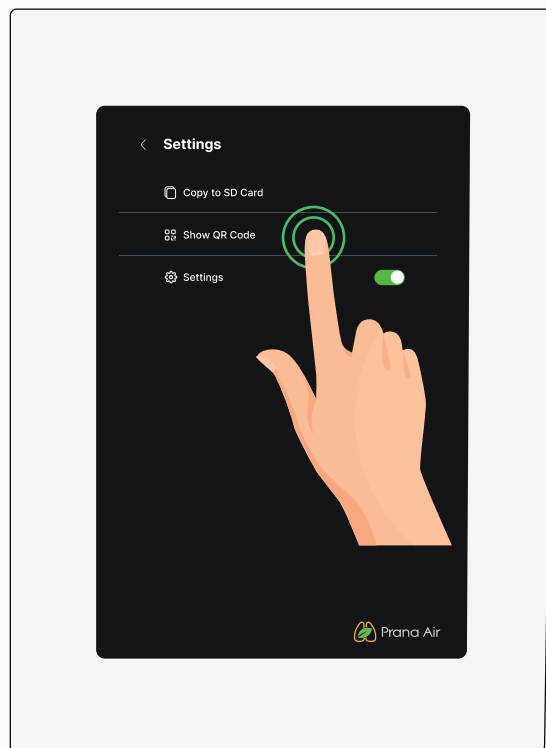


4

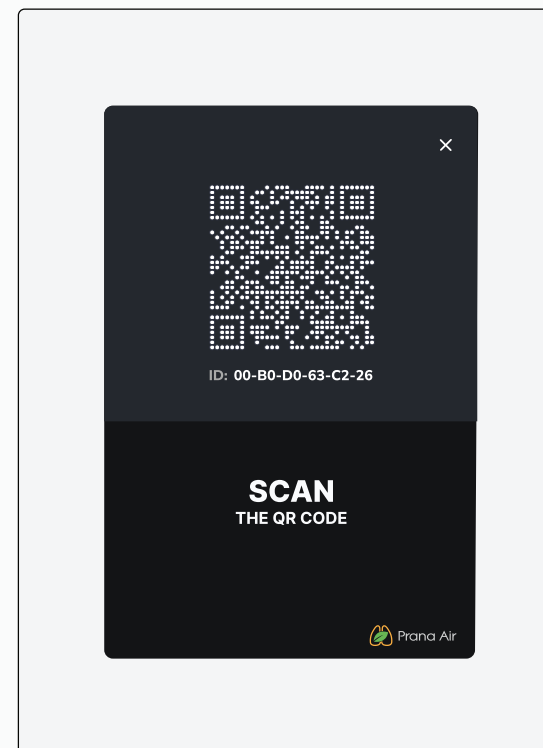
In settings screen, you will see list of options.



5 Select "Show QR Code" from the list.



6 The **Device ID** and **QR code** will be displayed on the screen. Follow the next steps to add the monitor in the AQI app.

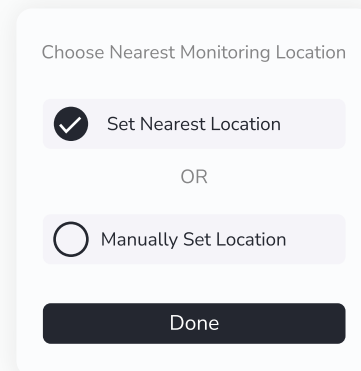
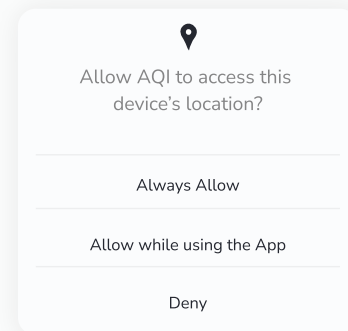
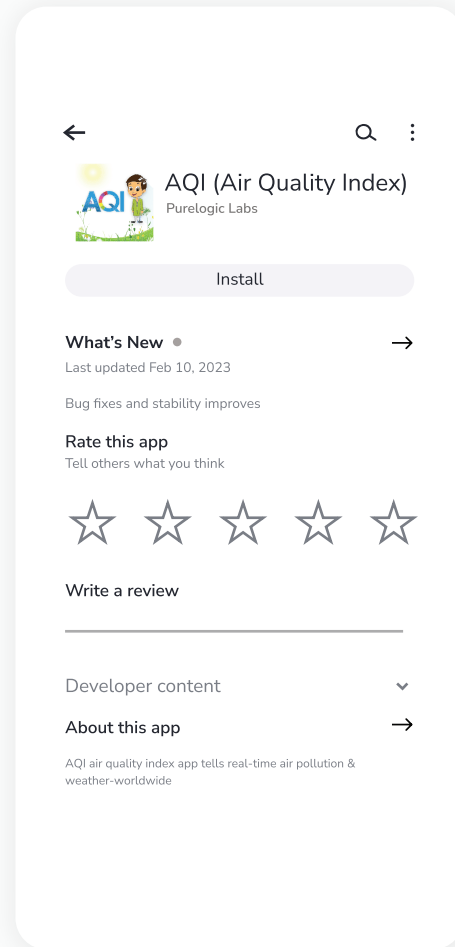


# Adding the Monitor in the AQI APP

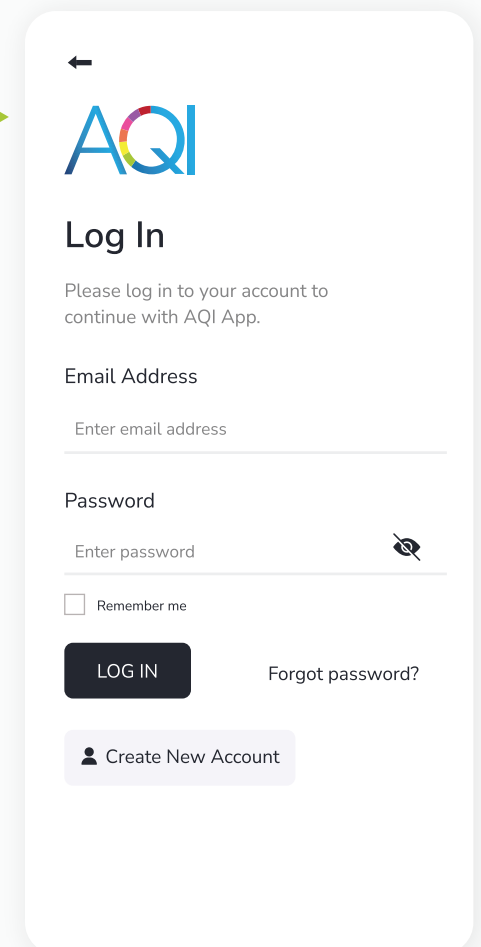
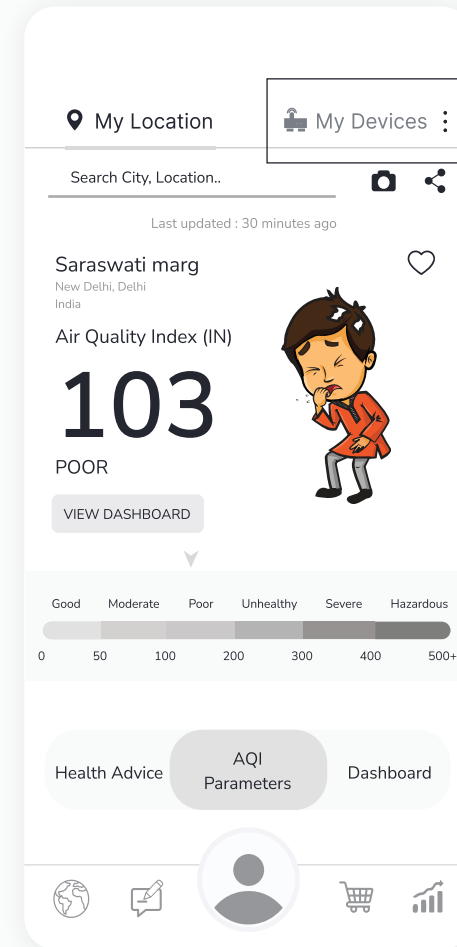
---

Upon successfully establishing a GSM connection with the monitor , please proceed to follow the steps to integrate the monitor into the app for remote data viewing.

1 Install the AQI App on your mobile from **Google play store** or **App store** and open it. Allow all the permissions accordingly.

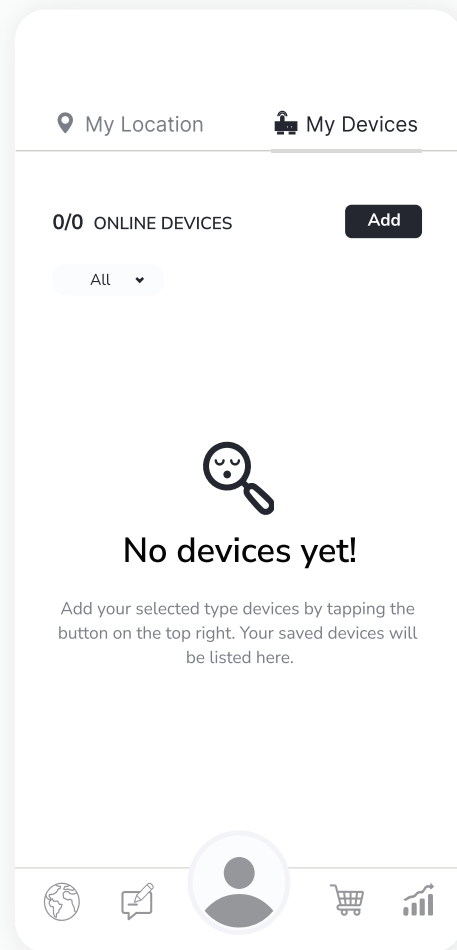


2 Click on **"My Devices"** to Sign up for creating a new account or Log in if you already have one. For Login/ Sign up procedure, refer to **Page 20**.

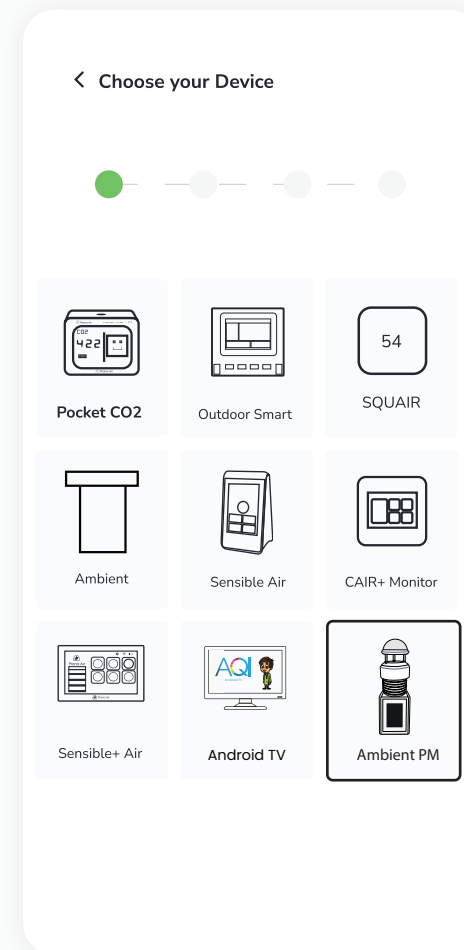




3 Once logged in, Go to **"My Devices"** and then click on the **"Add"** button.



4 Then select **"Ambient Pro"** under the 'Choose your Device' section.



5 Scan the QR Code or manually enter the device ID. Then click "Next".

← Enter Your Device Id

● ● ● ○

Enter Device ID  
Device Id

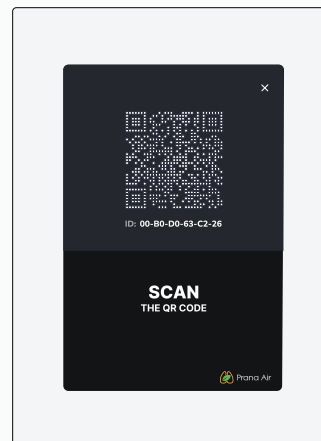
OR

Scan Qr Code

Next

**NOTE :**

You can find the Device ID or QR Code displaying on the screen of the monitor.



6 Add all the necessary details and then click on the "Setup" button.

← Configure your Device

● ● ● ● ○

Name your device  
DEVICE ID XXXXXXXXXXXXXXXX  
DEVICE TYPE Indoor

DEVICE NAME  
Ambient Pro

Select Location Office  
Enter Location Home

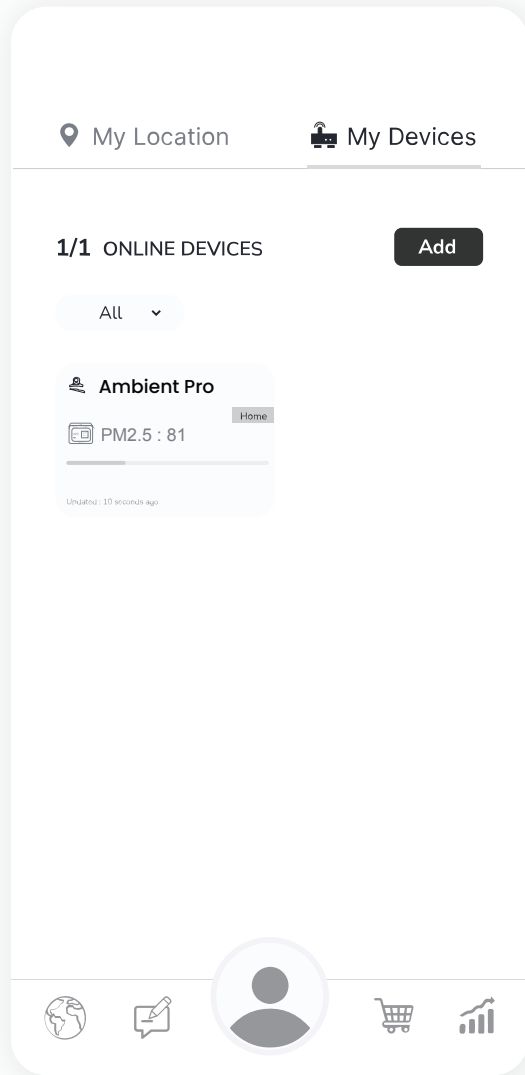
Country India  
State Delhi

City New Delhi

Setup

7

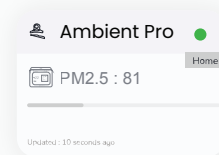
Your device is added successfully. You can see your added device under the "My Devices" section of the AQI App. Check the device's online status after 5 minutes. If offline, verify the power source, and WiFi connection.



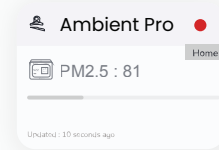
**NOTE:**

Please ensure the device is successfully added to the AQI app and has established an online connection.

Status :  
Device Online

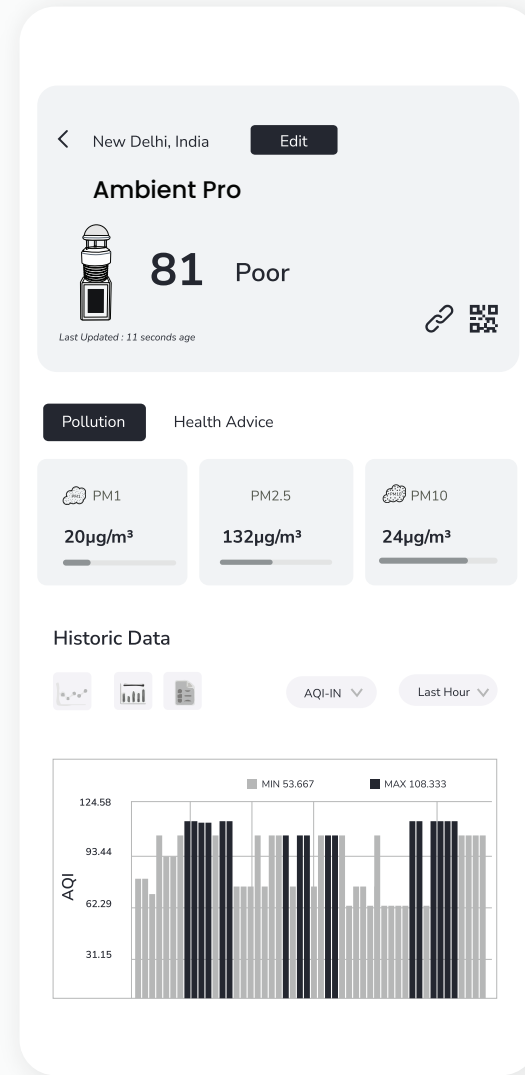


Status :  
Device Offline



8

Click on your device card in "My Devices" to get a detailed view of the monitored data. Click on the "Edit button" to edit the details of the device.



**NOTE :** The device will continue to display as online for 30 minutes even after going offline.

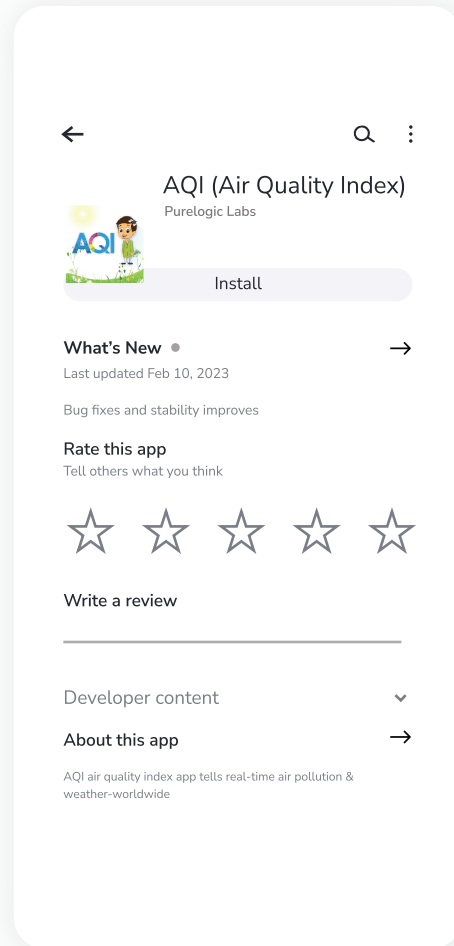
# How to log in/ sign up?

---

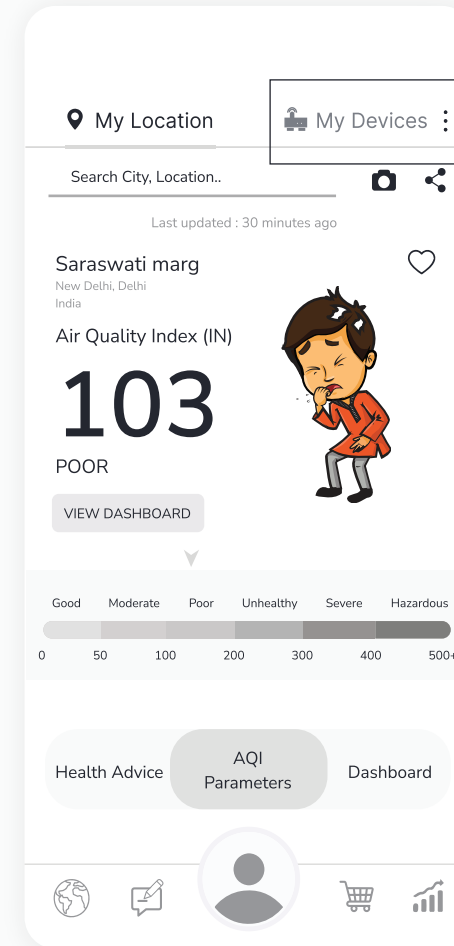
To provide access control, track monitored data, personalize the experience, and facilitate communication between users and the devices.

## Sign up :

- 1 Install the AQI India app on your smartphone.



- 2 Open the app and click on "My Devices" from the top right corner of the screen..



3

Click on the **"Create New Account"** button.

←

**AQI**

### Log In

Please log in to your account to continue with AQI App.

Email Address

Enter email address

Password

Enter password

Remember me

**LOG IN** [Forgot password?](#)

**Create New Account**

Lorem ipsum dolor sit amet, consectetur adipiscing elit, sed diam nonummy nibh euismod tincidunt ut laoreet dolore magna aliquam erat

4

Add the necessary details. Click on the checkbox after reading all the terms and conditions and privacy policies. Then click on the **"Sign Up"** button.

←

**AQI**

### Create Account

Please sign up to your account to continue with AQI App.

Username

Enter username

Email Address

Enter email address

Password

Enter password

Mobile No

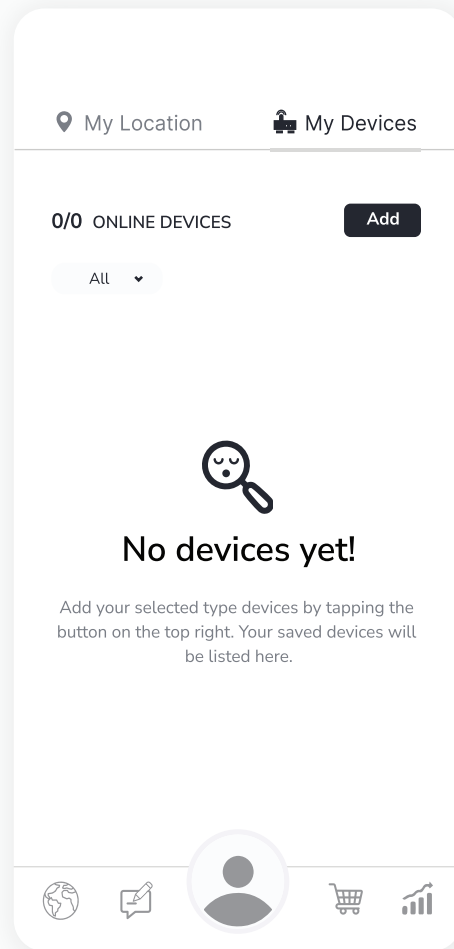
91+ Enter mobile

Yes, I agree with AQI [Terms of Use](#) and [Privacy Policy](#)

**SIGN UP**

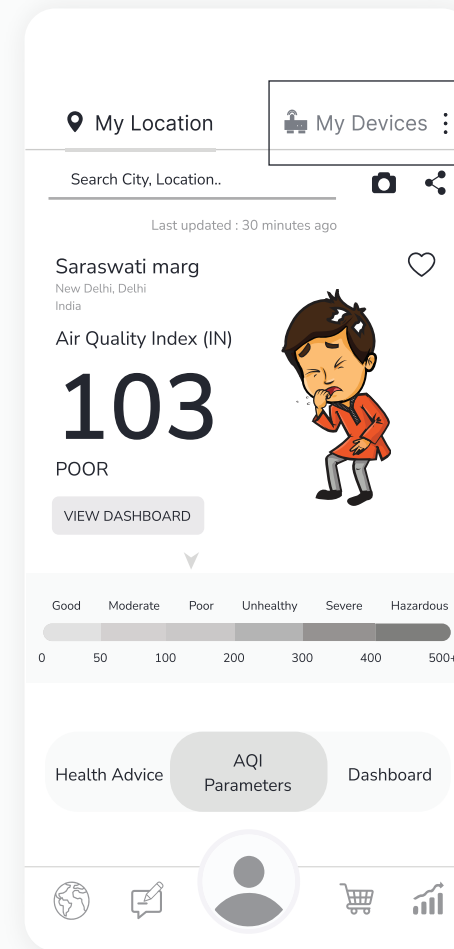
[Already have an account](#)

- 5 Your account is created. You will be redirected to **'My Devices'** section where you can add different devices.



## Login :

- 1 Open the app and click on **"My Devices"** from the top right corner of the screen.



2

Enter your credentials and then click on the "Log in" button.

←

**AQI**

## Create Account

Please sign up to your account to continue with AQI App.

**Username**  
Enter username

**Email Address**  
Enter email address

**Password**  
Enter password

**Mobile No**  
91+ Enter mobile

Yes, I agree with AQI [Terms of Use](#) and [Privacy Policy](#)

**SIGN UP**

Already have an account

3

You have now successfully logged in to your account. You can easily add devices and check the data remotely 24\*7.

My Location My Devices

0/0 ONLINE DEVICES **Add**

All

## No devices yet!

Add your selected type devices by tapping the button on the top right. Your saved devices will be listed here.



# Safety Guide

---

To ensure safe and proper usage of this product, please refer to the following safety guide before operating the device.

- 1 Read and follow the user manual before using the device.
- 2 Avoid exposing the device to extremely high temperatures, and humidity.
- 3 To avoid damage, keep the device away from water and other liquids. It can damage the device.
- 4 Take appropriate precautions if you are aware of any potential hazards or risks related to the specific environment you are monitoring.
- 5 **Preventive measures:** If the gadget detects high levels of pollutants or other potentially hazardous substances, take precautionary measures such as opening windows or leaving the area.
- 6 When connecting to the wifi network and the AQI app, kindly read the instructions carefully.
- 7 It is important to only use Prana Air repair services to fix the device.
- 8 **Accessories:** The user has the option to use an alternative adapter ( with the same power rating) and USB cable.

**NOTE:**

The user can opt for an alternative 5V/2.5A adapter.

# Safety and maintenance

---

The safety and maintenance section of this product manual provides important information on how to use and maintain the device in a safe and reliable manner.

- 1 Having a comprehensive understanding of the safety and maintenance instructions for the device can enable you to use the device more safely and efficiently, and help to extend its lifespan as much as possible.
- 2 Make sure to turn on the device properly.
- 3 The device is not waterproof. Please keep it and all the accessories dry.
- 4 If the air quality monitor is not functioning properly, do not attempt to repair it yourself.
- 5 Store the air quality monitor in a cool, dry place when not in use. This will help prevent damage to the device and extend its lifespan.
- 6 Do not drop, shake, or knock the device. Violent usage may damage the screen or the internal circuit.

# Service Guidelines

---

This section outlines the recommended maintenance procedures and service requirements for ensuring the optimal performance and longevity of the device.

## A. Warranty Terms

- 1 The device comes with a 1-year warranty against manufacturing defects.
- 2 A valid proof of purchase is required to be eligible for repairs or replacements.
- 3 Warranty will be void in case of physical damage.

## B. Sending and Retrieving the Device for Repair

- 1 The customer must provide the necessary information, such as name, contact number, and fault description, to complete the repair work order.
- 2 If payment is made by cheque, the device can only be retrieved after the cheque has cleared.

## C. Warranty Description

- 1 The warranty covers only the device and its accessories under normal usage. No warranty will be provided if the device is damaged due to any of the following reasons:
  - 1.1. Warranty period has expired.
  - 1.2. No valid proof of purchase is provided, or the purchase date is beyond the warranty period.
  - 1.3. The content on the valid proof of purchase is different from the actual product or has been altered.
  - 1.4. The device is damaged due to improper usage or maintenance.
  - 1.5. The device is damaged due to moisture, liquids, or falling, or has been repaired or disassembled by an unprofessional.
  - 1.6. Damages due to force majeure.1.6. Damages due to force majeure.
  - 1.7. Normal wear and tear of the device (such as outer cover, buttons, and screen).
- 2 Both national and international services can be availed only at Prana Air's office.
- 3 All replaced parts, components, and accessories during warranty services will be kept by the Prana Air service center.



Prana Air

**Visit us :**

[www.pranaair.com](http://www.pranaair.com)